

# JONIX mate

USE AND MAINTENANCE MANUAL



**AIR PURIFICATION DEVICE  
WITH ADVANCED COLD PLASMA TECHNOLOGY**

These instructions are translated from Italian (the original language).

JONIX srl reserves every right concerning this manual, including the right to make any necessary change or improvement to its products and to the manual at any time and without notice. It is forbidden to reproduce in full or in part this manual without JONIX srl's consent.

## TABLE OF CONTENTS

<b>1 - GENERAL INFORMATION</b>	<b>5</b>
1.1 - SERIAL NUMBER PLATE	5
1.2 - LIABILITY	5
1.3 - SYMBOLS	6
<b>2 - WARNINGS AND GENERAL PROHIBITIONS</b>	<b>6</b>
<b>3 - THE OPERATING SYSTEM</b>	<b>8</b>
<b>4 - TECHNICAL DATA JONIX<sup>mate</sup></b>	<b>9</b>
4.1 - COMPONENT DESCRIPTION JONIX <sup>mate</sup>	9
4.1.1 - Technical features JONIX <sup>mate</sup>	9
<b>5 - TECHNICAL DATA JONIX<sup>duct</sup></b>	<b>10</b>
5.1 - JONIX <sup>duct</sup> IONISING MODULES MANUFACTURING CHARACTERISTICS	10
5.2 - COMPONENT DESCRIPTION JONIX <sup>duct</sup>	10
5.2.1 - Technical features JONIX <sup>duct</sup>	10
5.2.2 - Using the JONIX <sup>duct</sup> module	10
<b>6 - RECEPTION, TRANSPORT AND STORAGE</b>	<b>11</b>
6.1 - PACKAGING	11
6.2 - HANDLING AND TRANSPORT	11
6.3 - INSPECTION UPON RECEPTION	11
6.4 - STORAGE	11
6.5 - HANDLING DEVICE IN OPERATING CONDITIONS	11
<b>6 - INSTALLATION AND COMMISSIONING</b>	<b>12</b>
7.1 - SAFETY STANDARDS	12
7.2 - GETTING STARTED	13
7.3 - CHOOSING THE INSTALLATION SITE	14
7.4 - ELECTRICAL CONNECTIONS	14
7.5 - ELECTRIC POWER SUPPLY	15
7.6 - USING THE DEVICE	15
7.7 - DEFAULT SETTINGS	15
7.8 - USER INTERFACE AND MENU NAVIGATION	16
7.8.1 - Main screen	16
7.8.2 - Ionisers screen	18
7.8.3 - Filters screen	18
7.8.4 - Fan screen	19
7.8.5 - Settings screen	19
7.8.5.1 - Date and time	19
7.8.5.2 - Language	20
7.8.5.3 - Protection	20
7.8.5.4 - Time slots	21
7.8.5.5 - Alarms history	22
7.8.5.6 - Maintenance	22
7.8.5.7 - Display	23
7.8.5.8 - Info	23
7.8.5.9 - Configuration	24
7.8.5.10 - Multimedia screen	24

<b>7 - MAINTENANCE</b>	<b>25</b>
7.1 - WARNINGS	25
7.2 - ROUTINE MAINTENANCE	25
7.2.1 - Cleaning the Ionising Tubes	26
7.2.2 - External cleaning of the equipment	30
7.3 - SPECIAL MAINTENANCE	31
7.3.1 - Replacing the Ionising Tubes	31
7.3.2 - Replacing filters	35
<b>8 - ACCESSORIES</b>	<b>39</b>
8.1 - AIR OUTLET FOR OVERPRESSURE ROOMS	39
8.1.1 - Connection examples	39
<b>9 - OPERATIONAL CHECK AND TROUBLESHOOTING</b>	<b>40</b>
<b>10 - DISPOSAL</b>	<b>41</b>
<b>WARRANTY CONDITIONS</b>	<b>42</b>
<b>EC DECLARATION OF CONFORMITY</b>	<b>43</b>
<b>ATTACHMENTS</b>	<b>44</b>
EXPLODED JONIX <sub>mate</sub>	44
OVERALL DIMENSIONS JONIX <sub>mate</sub>	45
ELECTRICAL DIAGRAMS JONIX <sub>mate</sub>	46

Thank you purchasing the JONIX<sub>mate</sub> device.

This manual contains the information and all that is required for the transportation, installation, use and maintenance of the JONIX<sub>mate</sub> sanitation and filtering module.

Improper installation of the device and/or failure to comply with the instructions in this manual, may invalidate the warranty that the Manufacturer issues for its products.

The Manufacturer is not liable for any direct and/or indirect damage caused by incorrect installation or damage caused by the units installed by inexperienced and/or unauthorised staff. At the time of purchase, check that the device is intact and complete.

The Manufacturer declines any liability in case of personal injury or property damage resulting from any improper use of the device or from the failure to observe the use and safety instructions specified in this manual. In any such case, any warranty claim will be void.

Any complaints must be submitted in writing within **8 days** of receiving the goods.







For more information, download of the manual or video tutorial, we invite you to visit [www.jonixair.com](http://www.jonixair.com).



## 1 - GENERAL INFORMATION

### 1.1 SERIAL NUMBER PLATE

The equipment described in this manual is provided with a plate (applied inside the panelling that closes access to the electrical panel and to the ionising modules) containing the equipment and Manufacturer data:

Fabbricante / Manufacturer 	<b>JONIX S.R.L.</b> Viale Spagna, 31/33 35020 Tribano (PD)
Nome del prodotto / Product name	<b>JONIX mate</b>
Descrizione del prodotto / Product description	Dispositivo per la sanificazione attiva e purificazione dell'aria
Codice prodotto / Model	<b>REF</b> 70MATEWHITE
Numero di serie / Serial number	<b>SN</b> xxxxxxxxxxx
Caratteristiche elettriche Alimentazione / Power Supply	230V / ~1 / 50Hz
Potenza nominale Assorbita / Power Consumption (W)	800
Corrente massima / Full load amperes (A)	3,46
    	

The sanitation and filtering module JONIX mate is in compliance with Directives 2006/42/CE, 2011/65/UE, 2014/30/UE, 2014/35/UE and subsequent amendments.

### IMPORTANT WARNING

**The JONIX mate device is designed and made to sanitise the air in residential environments that are incompatible with toxic and flammable gases. It is therefore strictly forbidden to use the device in environments where the air is mixed with and/or altered by other gaseous compounds and/or solid particles. Using the device for purposes other than those intended and that do not comply with those described in this manual, will immediately relieve the manufacturer and its distributors from any direct and/or indirect liability.**

### 1.2 LIABILITY

Failure to comply with the instructions contained in this Use and maintenance manual relieves the Manufacturer from any liability. For any information not included or that cannot be deduced from the Manual, consult the Manufacturer directly.

JONIX srl  
Viale Spagna 31/33  
35020 Tribano - PD - Italy  
<http://www.jonixair.com>

In particular, if equipment maintenance is carried out in a way that is not in compliance with the instructions supplied, or in a way to jeopardise integrity or modify features, JONIX srl is relieved from any liability inherent to safety of persons and faulty operation of the equipments.

## 1.3 SYMBOLS

Please pay utmost attention to the following symbols and their meaning. They emphasise specific information, such as:



**WARNING:** It refers to integrations or suggestions concerning the proper use of the device.



**HAZARD:** It refers to dangerous situations that may result from the use of the device, in order to ensure personal safety.



**FORBIDDEN:** This symbol refers to operations that must be avoided under any circumstances, and hence forbidden.



**HIGH VOLTAGE HAZARD!**

Do not open or remove any doors or protections before disconnecting the voltage supply.



**WARNING!**

It is mandatory to use protective gloves.



**WASTE FROM ELECTRICAL AND ELECTRONIC EQUIPMENT.**

The crossed-out wheeled bin symbol on the equipment label indicates that the equipment is compliant with the Waste Electrical and Electronic Equipment (WEEE) Directive. Disposing of the equipment freely in the environment or illegally disposing of the equipment are punishable by law.

## 2 - WARNINGS AND GENERAL PROHIBITIONS



This instruction manual is an integral part of the device and therefore must be kept carefully and must **ALWAYS** accompany the device, even in the event that it is sold to another owner or user or transferred to another facility. In the event that it is damaged or lost contact JONIX srl for another copy or download the document from [www.jonixair.com](http://www.jonixair.com).



Repairs and maintenance work must be carried out by JONIX srl authorised staff or by qualified staff according to the provisions set out by this manual. Do not alter or tamper with the device as it can lead to hazards and the manufacturer of the device shall not be liable for any damage caused.



After removing the packaging check that the contents are intact and complete. In the event of a noncompliance please contact the Company that sold you the device.



When installing, commissioning and operating this product, it is mandatory to observe the requirements and instructions specified in this manual.



JONIX<sup>srl</sup> disclaims any liability for damage caused to people, animals or property due to installation, adjustment and maintenance errors or by improper use.

Please note that the use of products that require electricity, involves the observance of some crucial safety rules such as:



This device is not intended for use by people (including children) with reduced physical, mental or sensory capabilities or without experience and knowledge, unless they are supervised or are given instructions to use the appliance by a person responsible for their safety. Take suitable precautions to prevent children from playing with the device.



Do not touch the device if you are barefoot and with parts of the body that are wet or damp.



Do not carry out any maintenance or cleaning operations without having first disconnected the device from the mains, by turning the main system switch to "OFF".



Do not alter the safety or adjustment devices without prior authorisation and instructions from the manufacturer of the device.



Do not pull, detach or twist the electrical wires coming out of the device, even when it is disconnected from the mains.



Do not stand, sit and/or rest any type of object on the device.



Do not spray or throw water or other liquids directly onto the device.



Do not open the panels for accessing the internal parts of the device without having first turned the system switch to "OFF".

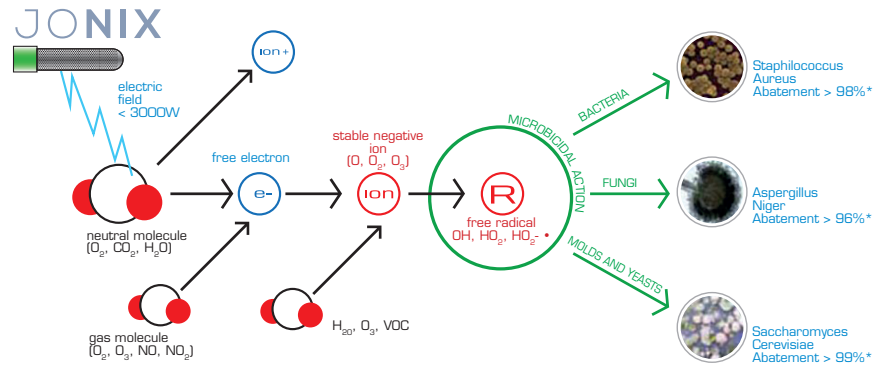


Do not dispose of or leave the packaging materials within reach of children because it can be potentially dangerous.

### 3 - THE OPERATING SYSTEM

This sanitization device, by exploiting the physical process of ionisation, promotes the controlled formation of particular ionic species (electrically charged species) in the air, through an electrostatic field that simulates the natural process that normally occurs through solar radiation, mechanically or by means of other physical phenomena.

The particular ionic species produced have proved to be particularly effective as sanitizing agents in the air and on surfaces, moreover are historically and scientifically proven to be beneficial in people, especially those with a negative electrical charge (arising from individual or small groups of molecules that receive an electron).



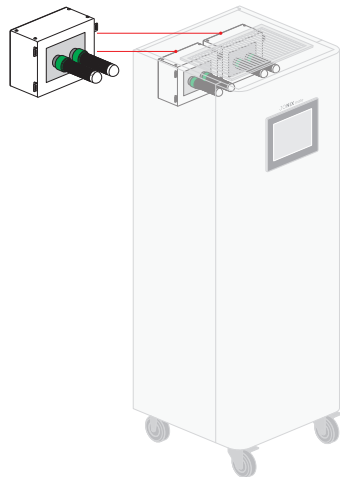
The JONIX mate mobile filtering and sanitation module, is the ideal solution for purifying and decontaminating air in environments at risk such as hospitals, clean rooms, food processing and packaging rooms and clinics.

It is immediately operational after installation, requiring no further operations.

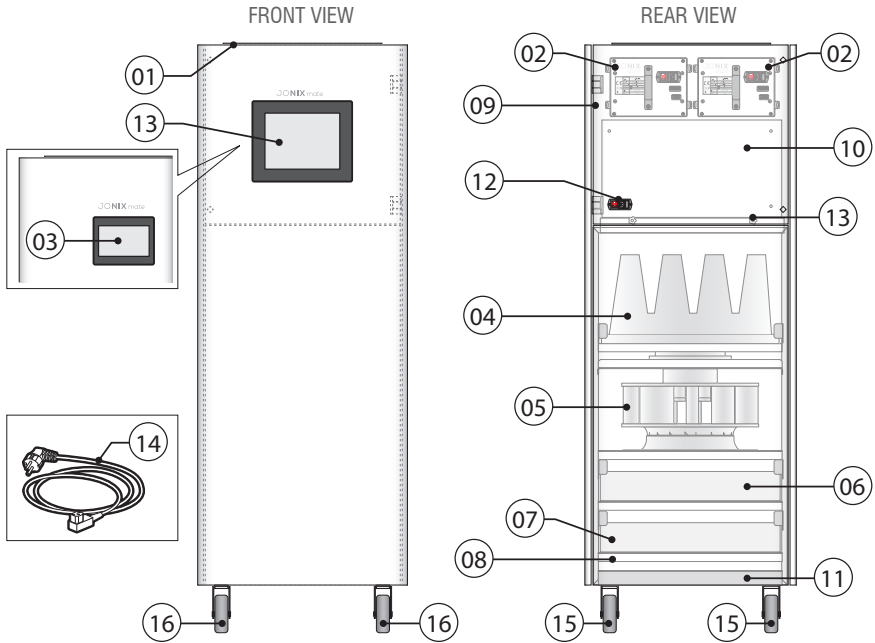
The device combines 3 progressive filtration stages to active air sanitization before it is reintroduced into the environment.

The advanced control system adjusts ventilation and the ionising load necessary to sanitise and purify air.

It is designed for quick and convenient maintenance as all its components can be accessed from the rear. The sanitising cabinet can be equipped with an air outlet to be installed in rooms with overpressure. Compact, portable and quiet, the JONIX mate module quickly and effectively meets the requirements of reducing bacterial and particulate load.



**4 - TECHNICAL DATA JONIX mate**



**4.1 COMPONENT DESCRIPTION JONIX mate**

01 Adjustable 2 way air outlet register	09 Rear panel closing
02 Ionising modules JONIX duct	10 Electrical panel
03 Display Touch screen (7" or 13")	11 Moveable aspiration mesh
04 H13 absolute filter	12 Power supply socket with protection fuse
05 Plug centrifugal EC fan	13 Filter access panel closing panel
06 Thin particulate filter F7	14 Power cable
07 Prefilter particulate coarse G4	15 Swivel casters
08 Connection for overpressure duct	16 Swivel casters with brake

**4.1.1 Technical features JONIX mate**

Model	Dimensions (WxDxH) [mm]	Power Supply	Max power absorption [W]	Air flow rate [m³/h]	Weight [Kg]
JONIX mate	678 x 700 x 1941	230 V / ~1 / 50Hz	800	from 500 to 3000	175

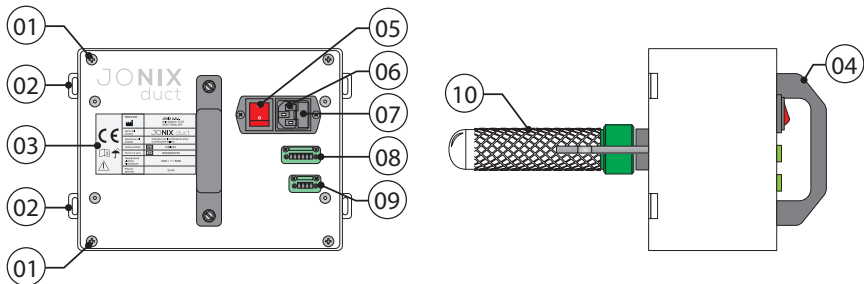


For the code of replacement components, refer to the "ATTACHMENTS" section.

## 5 - TECHNICAL DATA JONIX duct

### 5.1 JONIX duct IONISING MODULES MANUFACTURING CHARACTERISTICS

2 JONIX duct modules are mounted inside the JONIX<sub>mate</sub> device. They represent the sanitising section of the device, aimed at reducing the bacterial load and thus sanitising air entering the environments, improving their the Indoor Air Quality by ionising the air flow. They consist of a support box which houses the electrical part and of ionising tubes exposed to the air flow.



### 5.2 COMPONENT DESCRIPTION JONIX duct

01 box opening / closing screws	06 Power supply socket
02 Module fixing brackets	07 Protection fuses door
03 Technical data label	08 Input and serial signal connector
04 Handle	09 Alarm warning output connector
05 Light ON/OFF switch	10 Ionising tubes with earthing

#### 5.2.1 Technical features JONIX duct

Model	Item	Dimensions (LxPxH) [mm]	Power Supply	Max power absorption [W]	Weight [Kg]
JONIX duct	70MIC2C	290 x 350 x 200	230 V / ~1 / 50Hz	20	4

#### 5.2.2 Using the JONIX duct module



**In order to function the device must be connected to the power supply through the specific socket.**

To turn the device on, press the On/Off switch (04), moving it to position I.

The switch lights up, indicating that the device is on and a slight hissing sound indicates that the condensers have started running.

The alarm connector (09) enables to check the module status (normal operation, maintenance required or failure) by the machine in which the JONIX duct module is inserted.

## 6 - RECEPTION, TRANSPORT AND STORAGE

### 6.1 PACKAGING

JONIX<sub>mate</sub> and its accessories are delivered in specific protective packaging and must remain intact until they are assembled. The materials that were not installed for technical requirements are supplied with suitable enclosure secured to the inside or outside of the device itself. The package includes:

- JONIX<sub>mate</sub> sanitation and filtering module.
- Power cable.
- Operating and maintenance manual (with dimensional diagrams, wiring diagrams, Declaration of Conformity).

### 6.2 HANDLING AND TRANSPORT



To handle the device, use appropriate means, depending on the weight, as required by Directive 89/391/EEC and subsequent amendments.



Please take great care while unloading and positioning the devices, to prevent damaging the casing or components. Avoid uncontrolled rotations.

### 6.3 INSPECTION UPON RECEPTION

When you receive the device please check all its parts, in order to make sure that it has not been damaged during transport.

Any damage must be reported to the carrier, by filling in the relevant section on the delivery note and specifying the type of damage.



Any type of complaint must be sent in writing within eight days from receiving the goods.

### 6.4 STORAGE

In the event of extended storage keep the devices away from dust and sources of vibration and heat.



The Manufacturer disclaims any liability for damage due to incorrect unloading failure to protect the device from the elements.

### 6.5 HANDLING DEVICE IN OPERATING CONDITIONS

The JONIX<sub>mate</sub> device can easily be moved in various types of environments, as it has 4 360° rotating wheels. It can be blocked and secured in its operating position by the brakes on the two front wheels (see Chap. 4 "Technical Data").

JONIX<sub>duct</sub> device is easy movable in various environments, because it is provided with handle and reduced clearances (see Chapter 5 "Technical Data").

## 7 - INSTALLATION AND COMMISSIONING



**ATTENTION!** Before carrying out any operation on the devices read **ALL** the instructions in this manual carefully.

Definitions:		
<p><b>USER:</b> Person, organisation or company who or which has purchased or rented the device and is going to use it for the intended purposes.</p>	<p><b>USER/OPERATOR:</b> Individual who has been authorised by the user to operate the device.</p>	<p><b>QUALIFIED STAFF:</b> Individuals who have completed a specific course and are therefore able to recognise the hazards arising from the use of this device and are able to prevent them.</p>

### 7.1 SAFETY STANDARDS



**The Manufacturer disclaims any liability for failure to comply with the safety and prevention standards as described below.**

**The Manufacturer also disclaims any liability for damage caused by improper use of sanitisers and/or alterations carried out without prior authorisation.**

- The device must be installed in strict accordance with the instructions contained in this manual.
- Wear suitable accident prevention clothing when installing the device, such as: goggles, gloves, etc. as instructed in standard 686/89/EEC and subsequent amendments.
- While performing installation, operate in full safety, in a clean environment clear of obstructions.
- Comply with the laws in force in the country in which the device is installed, regarding the use and disposal of the packaging and products used for cleaning and servicing the device; you should also observe the recommendations given by the manufacturer of such products.
- **Before switching the device on check the integrity of the various components and of the electrical mains to which it is connected, making sure that it is fitted with a circuit breaker upstream of the power line as shown in this manual.**
- Never insert objects of any kind into the device, as coming into contact with live parts or electrical terminals may cause fires or electric shocks.



**WARNING!**

**Mechanical machinery in motion and dangerous points of voltage inside the device. Risk of dragging and entrapment or electric shock.**

- Do not service or clean the device without first unplugging it from the mains.



- Worn or damaged parts must only be repaired or replaced by qualified staff and by following the instructions given in this manual.
- The spare parts must be approved by the Manufacturer.
- In the event of decommissioning or disposing of the device, follow the anti-pollution regulations set out by the country in which the device is installed.
- Do not pour water or any kind of liquids on the device.
- Place the device so that the power cable cannot be stepped on.
- Do not connect the device to power lines connected to any other electric utilities or devices.
- **Use the type of power supply shown on the label. If you are not sure about the type of power supply available, ask your local retailer or electricity provider for assistance.**
- Do not touch the inside of the device, unless specified otherwise in the instructions contained in this manual.
- Never force the components when assembling: although it is made with high strength materials, the parts of the device can be damaged if handled incorrectly.
- Do not try to perform maintenance work on the device, except where specified in this manual. Opening or removing the outer casing may expose you to dangerous live parts or may involve other risks. All maintenance work must be carried out by authorised staff, except where specified in this manual.
- Unplug the device from the mains and contact qualified staff for assistance in one of the following cases:
  - The device has come into contact with water or liquids of any kind.
  - The device has been exposed to the elements.
  - A malfunction persists despite all the installation and/or maintenance procedures have been performed properly.



**IMPORTANT** The installer and the user, when using the JONIX<sup>mate</sup> device, must take into account and solve all the other types of risk associated with the system. For example, risks arising from foreign bodies getting into the device or risks due to dangerous flammable or toxic gases at high temperature.

## 7.2 GETTING STARTED

---



- Check that the various components of the device are fully intact.
- Check that the documentation and any accessories for installation are contained in the package.



- Carry the device in its packaging as close as possible to the installation site.
- Do not rest weights or tools on the device, or place it on an unstable surface.

## 7.3 CHOOSING THE INSTALLATION SITE

---

The packed device is fixed on a pallet with some screws. Once brought to the installation site, it has to be unscrewed from the pallet before proceeding with the installation.



Get the appropriate tools to lift and unpack the device.



- Do not put the device in places where there are flammable gases, acidic, aggressive and corrosive substances that can damage the various components beyond repair.
- Provide a minimum clearance, in order to install the device and carry out routine and special maintenance.



**ATTENTION:** Due to the size and weight of the device, make sure that for handling a sufficient number of people is available, so that the weight to be loaded by each person is not more than 25 kg in the case of manual handling (in this regard, check the weight on Chapter "Technical data").

## 7.4 ELECTRICAL CONNECTIONS

---



**ATTENTION! BEFORE STARTING ANY OPERATION, MAKE SURE THAT THE MAIN POWER SUPPLY IS DISCONNECTED!**

- The electrical connections must be carried out following the instructions provided in this manual.
- **Make sure that voltage and frequency of the electric line correspond to those provided on the name plate.**



**WARNING!**

**Using power supply that does not meet the requirements requested by the device could resolve in damaging the device or part of it.**

- The electrical mains of the JONIX<sub>mate</sub> device must be used for the device only, there must be no other devices powered by the same power line. Do not use adapters, power strips and/or extension cords.
- Make the connection with cables with a suitable cross-section and in compliance with local standards.
- **The installer must see to it to assemble the device as close to the power disconnecter as possible, according to standards in force and as far as necessary to protect the electrical parts.**

## 7.5 ELECTRIC POWER SUPPLY

The JONIX<sub>mate</sub> device leaves the factory fully wired. It only needs to be plugged into the electric mains, 230V/ ~1 / 50Hz + PE. The unit is provided with power cord with Schuko plug. The user has to provide a differential circuit breaker upstream in compliance with current norms. The socket on the rear panel is equipped with a fuse.



### ATTENTION!

Use the cable supplied for connection to the mains or use one with the same section always made up of F, N and T.



Before making any connections, make sure the mains voltage complies with what is shown on the label.

The ON/OFF switch (placed next to the power supply socket on the front panel), indicates when the device is powered.

## 7.6 USING THE DEVICE

Fig. 01: Connect the device to the mains using the power cable provided.

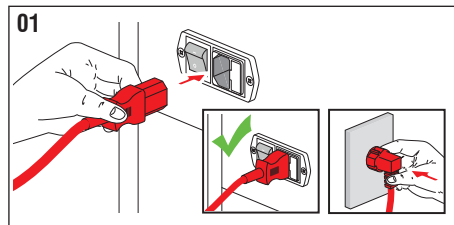
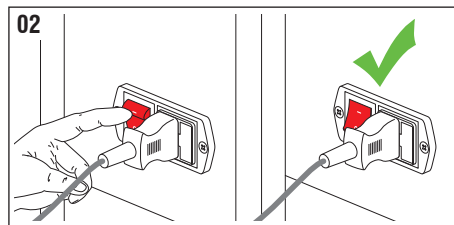


Fig. 02: Once connected to the mains supply, the JONIX<sub>mate</sub> module is ready to work. In order to turn on the device act on the red switch **O/I** (present on the upper rear panel) turning it to **I**.



The control and the setting of functions is set using the Display (see chap. "Technical Data" and "User interface and menu navigation").



### WARNING!

it will take some minutes for the display to load the software correctly. When the device is turned on the display might appear to be turned off.

## 7.7 DEFAULT SETTINGS

The module is set with the following default parameters:

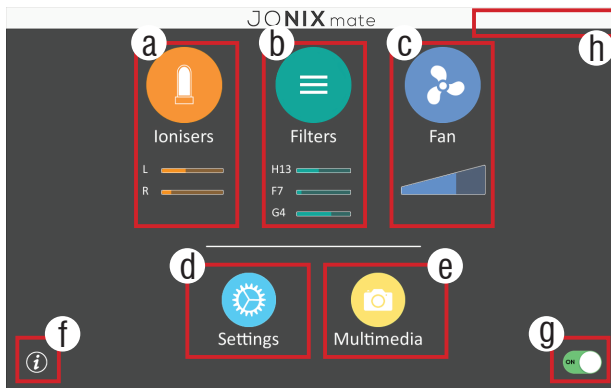
Air flow rate (m <sup>3</sup> /h)	No. of ionising modules on
2000	2

## 7.8 USER INTERFACE AND MENU NAVIGATION

JONIX mate is provided with a touch screen, allowing the user to control device status and to modify its operation as needed.

### 7.8.1 Main screen

It allows to check quickly the device status and to modify its operation mode.



The various icons create a shortcut to other screens where the user can check the status of every single component in a more detailed way and its own personalization as needed.

In the main screen are reported this information:

- a) **Ionising modules:** the bars show the wear status of the ionisers (left or right). When the cleaning of the ionizing tubes will be needed, or once the bars will be filled to indicate that the ionizing tube has to be replaced, an alarm notification will appear on the icon. The LED next to the corresponding bar indicates whether the module is on (green LED) or off (grey LED).
- b) **Filters:** the bars show the level of filth of the corresponding filter (G4, F7 or H13). When the bars will be filled, which indicates that the filter has to be replaced, an alarm notification will appear on the icon.
- c) **Fan:** the bar show the airflow rate of the fan.
- d) **Settings.**
- e) **Multimedia.**
- f) **Info.**
- g) **On/Off button:** it allows to change the operating status of the device.
- h) **Time.**

## Lock screen button:

It is possible to lock the screen of the JONIX<sub>mate</sub> device by clicking on the specific button with a lock on it, placed in the upper left corner of the screen.



Once the screen is locked it will not be possible to carry out any action without entering the password to unlock.

## Alarms notifications and alarms screen:

When the Jonix will notice that the user intervention is needed, this alert state will be shown with the appearance of a notification on the icon of the device part that has caused the alarm.



Alarm

Touching the "alarm" notification the user will be sent to the active alarms screen to see the notification detail:

From this screen it is possible to:

- Access the maintenance menu to record the operations required by the machine once carried out (see chap. "MAINTENANCE" of this manual).
- Access the alarm log screen to view all the messages sent by the device from the moment it was first switched on.

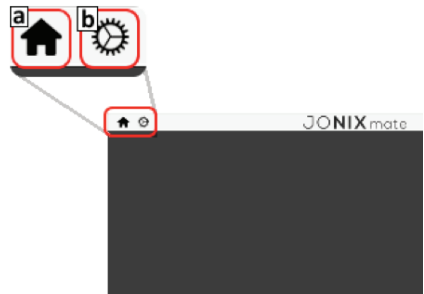


To solve the problem displayed read the chap. "MAINTENANCE" or "OPERATIONAL CHECK AND TROUBLESHOOTING" of this manual. **Touch the RESET button to delete the notification when the problem has been solved.**

## Quick keys on the upper bar:

All following screens incorporate on their bar, on the top left, two quick keys that grant direct access to the respective screens:

- "Home" button:** allows you to return to the main screen.
- "Settings" button:** allows you to access the settings menu screen.



To return to the previous screen, press the large icon on the current screen (located at the top left of the screen).

### 7.8.2 Ionisers screen

It displays the detailed status of the modules and allows the management of each of them according to the user needs.

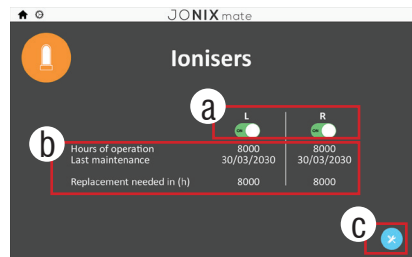
a) **On/Off button:** it turns on/ off the corresponding module (LH - RH).

**Attention: when the time slots are activated, the buttons are disabled. To make them usable again, disable time slots.**

b) **Module status summary:**

- Hours of operation: it reports the total amount of hours of operations of the corresponding module.
- Last maintenance: it reports the date when the last cleaning or replacement operation on the corresponding module was recorded.
- Replacement needed in (h): hours remaining to the replacement of the ionising tubes of the corresponding module.

c) **Maintenance menu quick key:** to access the module maintenance screen and record the maintenance operation performed.



### 7.8.3 Filters screen

Shows a more detailed filters status.

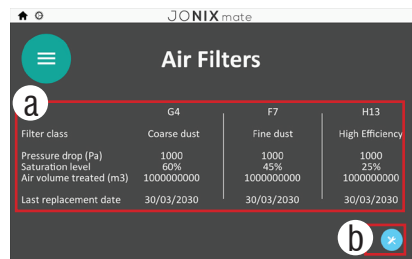
a) **Filters status summary:**

- Filter class: filter type description.
- Pressure drop (Pa): shows the pressure drop measured on the corresponding filter by the sensors.
- Saturation Level: shows the percentage saturation rate of the corresponding filter. Once the 100% is reached the component replacement becomes necessary.

**ATTENTION: this number could not be equal to zero even when the filter is new.**

- Air volume treated (m<sup>3</sup>): total air volume filtered from the last component replacement.
- Last replacement date: shows the last time that the corresponding filter was replaced.

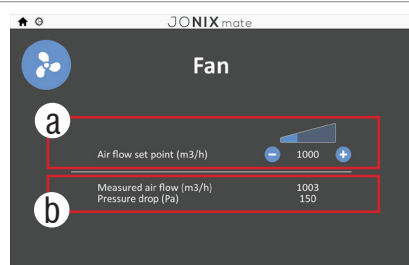
b) **Maintenance menu quick key:** to access the module maintenance screen and record the maintenance operation performed.



### 7.8.4 Fan screen

Shows a more detailed fan status and allows the management of its operation status as needed.

- a) **Air flow set point (m<sup>3</sup>/h):** through the buttons “-” and “+” the flow rate can be set in a range between 500 and 3000 m<sup>3</sup>/h with an increasing / decreasing step of 100 m<sup>3</sup>/h. **Warning: if the time bands are active, the buttons are deactivated. To enable them again, disable the time bands.**
- b) **Fan status summary:**
  - Measured air flow (m<sup>3</sup>/h): it is the real time measurement of the air flow of the fan (from the appropriate sensor).
  - Pressure drop (Pa): it is the real time measurement of the pressure drop on the fan (from the appropriate sensor).



### 7.8.5 Settings screen

It shows all the sets of parameters of the device.



#### 7.8.5.1 Date and time

Date and time can be set by touching the buttons “+” and “-” or directly by means of the keypad that appears by clicking on the number you wish to edit.



Press the bottom right key to synchronise the internal clock each time a change is made.



## 7.8.5.2 Language

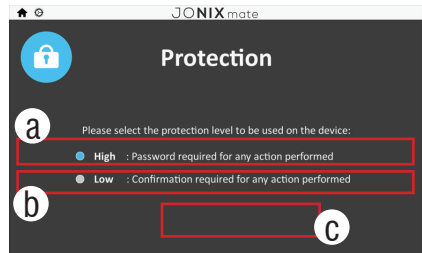
The user can set the language of the text on the display from this screen. The light icon shows which language is used in that moment; touch another icon to modify it.



## 7.8.5.3 Protection

Set the authorizations management to check the device.

- a) **High:** the operating system requires a password to perform every action that can change the device operating status. Once the password is inserted, the system keeps the user activated for 10 minutes. After that period the password must be reinserted. to log in, touch the symbol “\*\*\*\*”, insert the password on the keyboard and push the Enter button to confirm or the Esc Button to cancel the operation. Touch the confirmation button (green tick) to confirm the password, or the cancel button (red cross) to cancel the operation. Once logged in, click on the desired button again.



If the user wants to logout before the 10 minutes have elapsed, he can touch the logout button that will pop up in the settings screen after the login.



- b) **Low:** the operating system requires a confirmation (without password), touching a button, on every action that can modify the device operating status.

The actions that can be protected with password are:

- Device On/Off.
- Ionising modules On/Off.
- Increase/decrease of the fan speed.



**The password of the device JONIXmate is: 100.** It is possible to modify the password holding the button to the side of the currently set password.



**In case of change of password it is recommended to save the new password in a readily available support.**

The screens that are protected with password regardless the protection level set are:

- Protection
- Time slots
- Maintenance



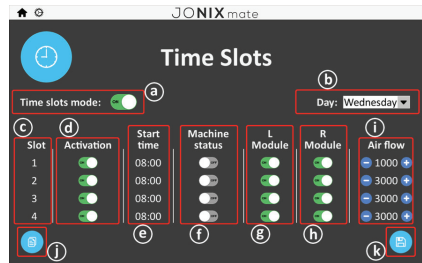
### 7.8.5.4 Time slots

Up to 4 time slots for every day of the week can be set.

- a) **Time slots mode:** enable / disable time slots mode.
- b) **Day:** day of the week selected.

Every time slot is defined by different parameters:

- c) **Slot:** for each day of the week it is possible to set up to 4 time slots.



- d) **Activation:** enable / disable time slots mode.
- e) **Start time:** start time of the time slot.



**The setting of the start time of the next slot (in the same day or in another) implies the end of the previous time slot.**

- f) **Machine status:** enable / disable JONIX mate.
- g) **L Module:** enable / disable the left ionising module.
- h) **R Module:** enable / disable the right ionising module.
- i) **Air flow:** set up of the fan airflow.
- j) **Copy button:** allow to copy the time slots of a day in one or more different days. Touching the button, a dialog box will appear where must be chosen the day from which the slots will be copied and the day in which they will be copied. Once the operation will be confirmed, the day displayed will be changed in the one in which are just been copied the time slots.



**NOTE:** it is possible to copy the slots in one single day for time. To copy the slots in more days this action must be repeated.

- k) **Save button:** when the user begin to modify a time slot, this button appears to apprise that a modification to the previous settings is occurring and needs to be saved in the memory of the system. When the saving operation is successfully finished the button disappears.



**NOTA:** it is always necessary to save before changing the day (using the menu in the box b) or leave the menu. If not, the modification will be lost.



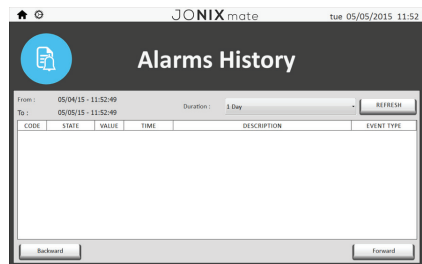
If only one time slot is set or enabled, the device will operate with the parameters set in that slot until it will be disabled or will be added another slot.



**When time slots are enabled it is not possible change the operating status of the ionising modules or the air flow rate of the fan in their corresponding screens (7.8.2 and 7.8.4).**

## 7.8.5.5 Alarms History

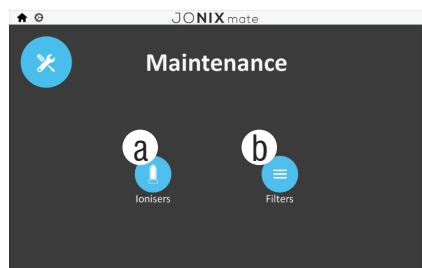
Shows the list of all the alarm messages displayed from the device in the set time lapse.



## 7.8.5.6 Maintenance

Maintenance screens of the ionising modules and of the filters are accessible from this screen.

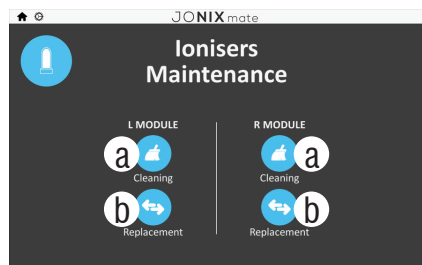
- a) Access to the menu "Ionisers Maintenance".
- b) Access to the menu "Filters Maintenance".



### Ionisers Maintenance

Allows to record the date when a maintenance operation was done on the ionising modules.

- a) **Cleaning:** records the cleaning operation.
  - b) **Replacement:** records the substitution operation.
- After pressing one of the keys, a message of confirmation of the recording by the system of the maintenance operation that was done will appear.



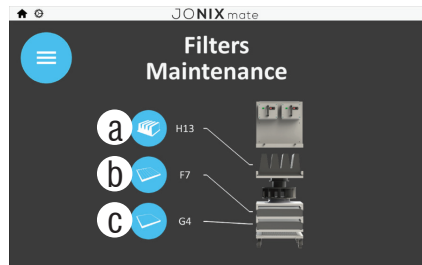
**NOTE:** The operation does not represent the maintenance of the components but only the recording of the system of the intervention carried out by the user. The maintenance procedures are explained in the chapter "Maintenance" of this manual.

## Filters Maintenance

Maintenance operations on the corresponding filter can be recorded in the system from this menu.

- a) Filter H13.
- b) Filter F7.
- c) Filter G4.

After pressing one of the buttons, a message of confirmation of the record by the system of the maintenance operation that was done will appear.



**NOTE:** The operation does not represent the maintenance of the components but only the recording of the system of the intervention carried out by the user. The maintenance procedures are explained in the chapter "Maintenance" of this manual.

## 7.8.5.7 Display

The brightness of the display can be modified using the buttons "+" and "-".



## 7.8.5.8 Info

Shows the device identification data.

- a) **Multimedia:** Quick key to the multimedia menu.



## 7.8.5.9 Configuration

- a) **Advanced configuration:** restricted menu for technical support, not accessible to the final user.



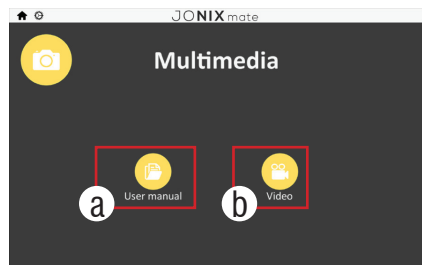
## 7.8.5.10 Multimedia screen

Shows the links to all the multimedia content installed on the system.

- a) **User manual:** enables to display an extract of the user manual directly from the display.
- b) **Video:** allows to view video contents.



NOTE: if multimedia content is not present, the icons are obscured.



## User manual

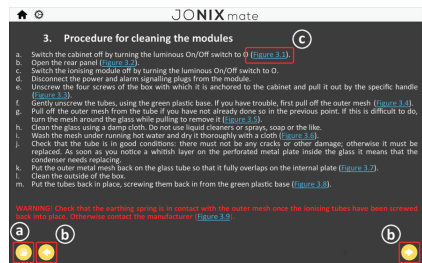
Enables to display an extract of the user manual directly from the display.

- a) Key to return to the multimedia menu.



Chapter screen appear as follows:

- a) Quick key to return to the chapter index.
- b) Navigation keys inside the current chapter.
- c) Link to the multimedia file (image or video) regarding the operation described in the manual.



## 7 - MAINTENANCE

### 7.1 WARNINGS



**BEFORE CARRYING OUT ANY MAINTENANCE OPERATION MAKE SURE THAT THE DEVICE IS NOT AND CANNOT ACCIDENTALLY BE POWERED ELECTRICALLY. YOU MUST THEREFORE UNPLUG THE DEVICE BEFORE CARRYING OUT ANY MAINTENANCE.**

- It is the duty of the user to perform all the maintenance operations on the device listed below.
- If you experience a malfunction, unplug the device from the mains and contact qualified staff (retailer, the Manufacturer).
- Only trained and qualified personnel can perform maintenance operations.



**Use work gloves to protect your hands when performing maintenance.**

The frequency of the operations to be performed to ensure proper maintenance of the device JONIX<sub>mate</sub> depends mainly on the quality of the treated air.

Air can be especially harmful for condensers when it contains polluting or aggressive substances such as:

- Industrial flue gas
- Sale
- Chemical smoke
- Heavy powders



**By coming into contact with the inside or outer surfaces of the device by means of the air flow or by direct exposure, these substances can lead to a structural and functional failure of the device and of its performance as time passes and without proper, systematic maintenance.**

### 7.2 ROUTINE MAINTENANCE

The JONIX<sub>mate</sub> device requires a small amount of maintenance consisting in regularly cleaning of cold plasma generators and checking the filters.

JONIX<sub>mate</sub> device, signals the need of maintenance of the modules through an alarm viewed on the display, every 1000 hours of operation. Filters do not need to be cleaned periodically but will need to be changed when they reach saturation.

However, when operating in highly contaminated environments, the electronics of the device could intervene even if this time has not yet elapsed.

## 7.2.1 Cleaning the Ionising Tubes



Clean the ionising tubes every time it is shown on the display.

Fig. 03: Switch the device off by turning the luminous On/Off switch to **0**. Remove the plug connected to the mains.

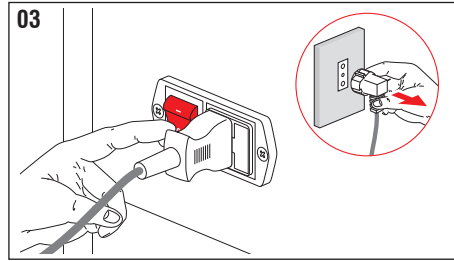


Fig. 04: Use a screwdriver to open the rear panel.

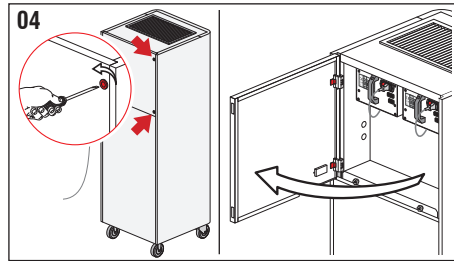


Fig. 05: Switch the JONIX duct module off by turning the luminous On/Off switch to **0**. Disconnect the power supply plug and the other plugs from the JONIX duct module.

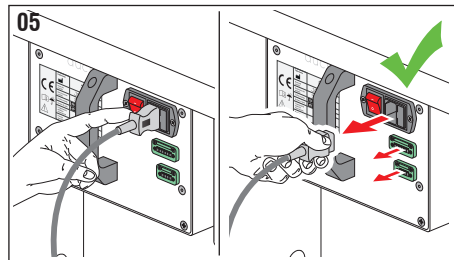


Fig. 06: Unscrew the four screws of the box with which it is anchored to the cabinet and pull it out by the specific handle.

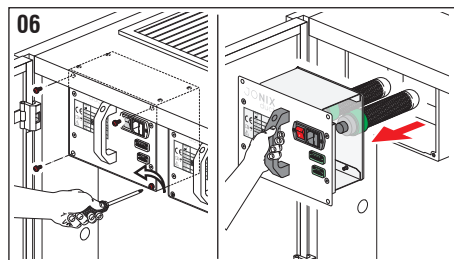


Fig. 07: Gently unscrew the tubes, **using the green plastic base**. If you have trouble, first pull off the outer mesh.



If the operation is difficult to perform, pull slightly the earthing spring so that it is not in contact with the surface of the tube.

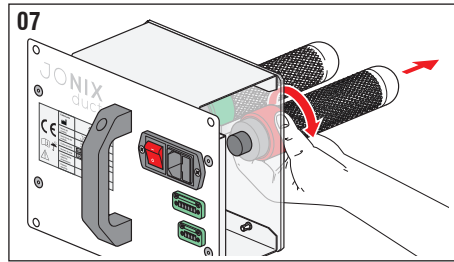


Fig. 08: Pull off the outer mesh from the tube if you have not already done so in the previous point.

If this is difficult to do, turn the mesh around the glass while pulling to remove it.

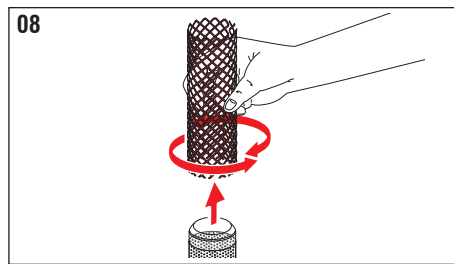
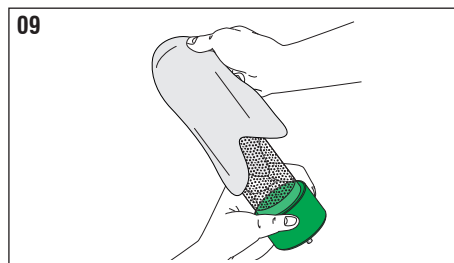


Fig. 09: Clean the glass using a damp cloth.



**Do not use liquid cleaners or sprays, soap or the like.**



Check that the tube is in good conditions: there must not be any cracks or other damage; otherwise it must be replaced. As soon as you notice a whitish layer on the perforated metal plate inside the glass it means that the ionising tube needs replacing.

**The tubes must usually be replaced within 18 months of use.**

Fig. 10: Wash the mesh under running hot water and dry it thoroughly with a cloth.



**Do not put back the mesh on the ionising tube if it is even partially wet.**

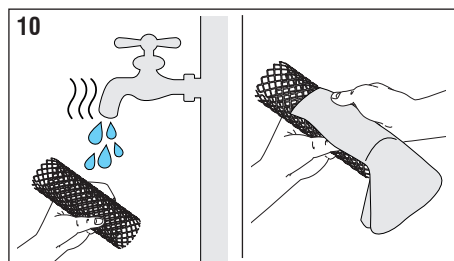


Fig. 11: Put the outer metal mesh back on the glass tube so that it fully overlaps the internal plate.



**In any case ensure a minimum distance of at least 3 mm from the base of the tube.**

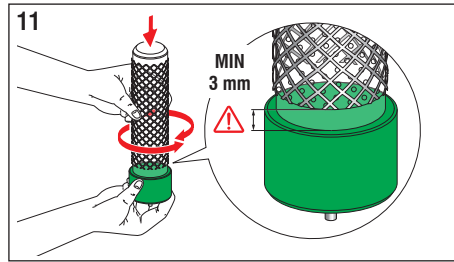


Fig. 12: Gently screw the ionising tube holding on to the base (green part). If the operation is difficult to perform, pull slightly the earthing spring so that it is not in contact with the surface of the tube.

**ATTENTION: do not overtighten the screw after reaching its end stop.**



**Check that the earthing spring is in contact with the outer mesh once the ionising tubes have been screwed back into place. Otherwise contact the manufacturer.**

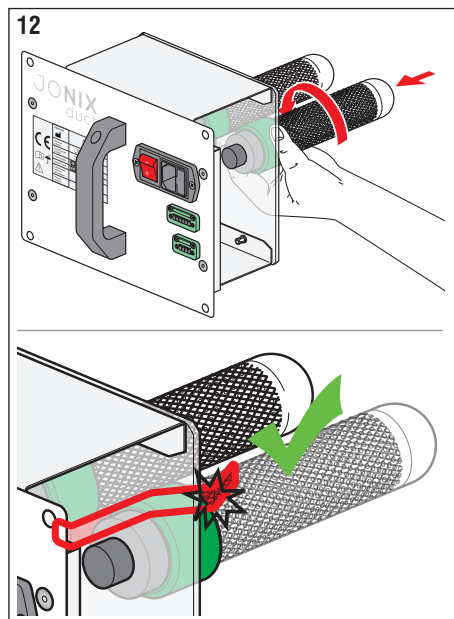


Fig. 13: Reposition the JONIX duct module, inserting it horizontally into its box by using the handle and tighten the 4 fixing screws.

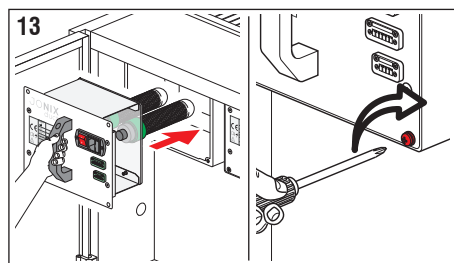




Fig. 14: Reinsert the power supply plug and all other plugs into the specific sockets of the JONIX<sub>duct</sub> module. Switch the module on by turning the On/Off switch to I.

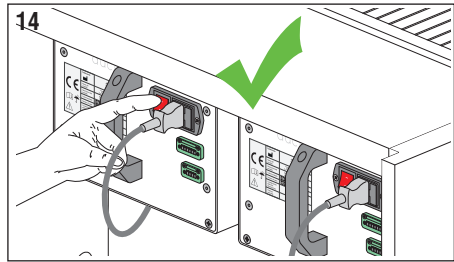


Fig. 15: Close the rear panel.

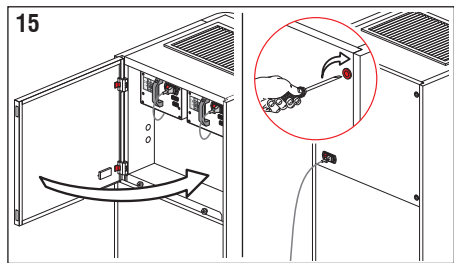
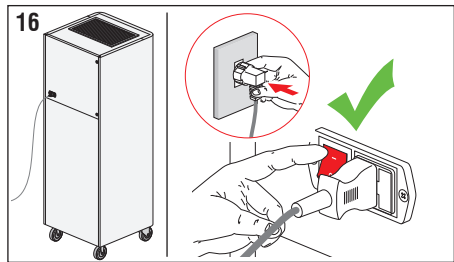
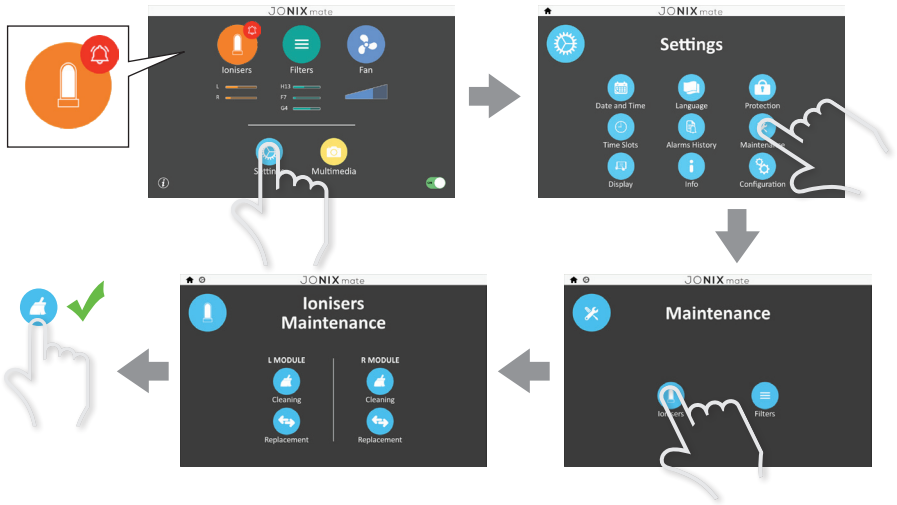


Fig. 16: Reinsert the power supply plug. Switch the device on by turning the On/Off switch to I.



Register the maintenance operation done using the display:



Reset the alarm launched by the device in the alarm screen:



Make sure the condensers work properly: you must be able to hear a slight hissing. Check that the device responds to commands. Should a malfunction persist, unplug the device from the mains and contact qualified staff.

**Failure to clean the ionising tubes when indicated by the device leads to a drop in system performance.**

## 7.2.2 External cleaning of the equipment

Clean the outside of the device with a damp cloth.



**Do not use liquid cleaners or sprays, soap or the like.**

## 7.3 SPECIAL MAINTENANCE

The components of the device subject to time deterioration hence they need to be replaced are:

- **ionising tubes:** when signs of wear appear, it is necessary to replace the component. They are evident with the appearance of oxide in the condenser internal mesh that will make it whitish, and that will render the glass opaque. The device will signal the need of replacement of the component after 14000 hours of operation.
- **filters:** the components have the function of barrier, and they tend to saturate so that eventually they will obstruct the air flow. The detection devices internal to JONIX<sup>mate</sup> signal how necessary is an operation of replacement in order to maintain a smooth functioning of the device.

### 7.3.1 Replacing the ionising tubes



Replace the ionising tubes every time it is notified on the display.

Fig.17: Switch the device off by turning the luminous On/Off switch to **0**. Remove the plug connected to the mains.

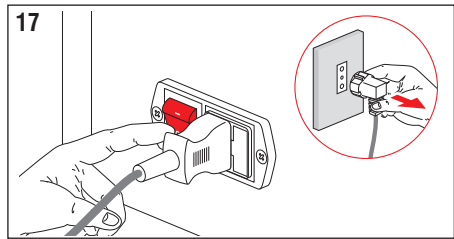


Fig. 18: Use a screwdriver to open the rear panel.

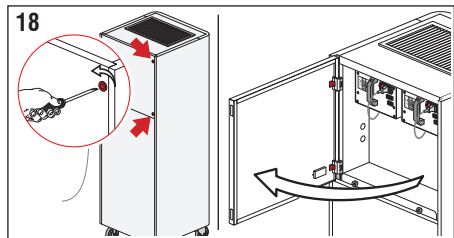


Fig. 19: Switch the JONIX<sup>duct</sup> module off by turning the luminous On/Off switch to **0**. Disconnect the power supply plug and the other plugs from the JONIX<sup>duct</sup> module.

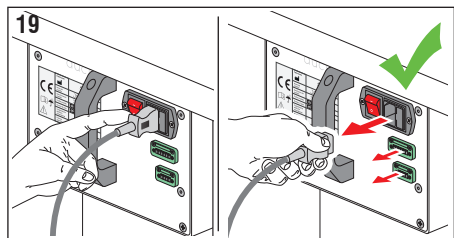


Fig. 20: Unscrew the four screws of the box with which it is anchored to the cabinet and pull it out by the specific handle.

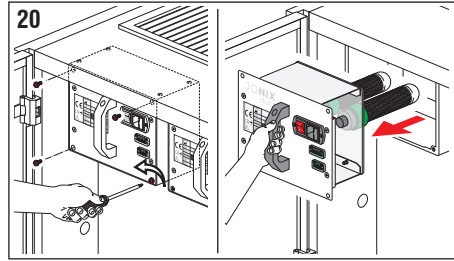


Fig. 21: Gently unscrew the tubes, **using the green plastic base**. If you have trouble, first pull off the outer mesh.



If the operation is difficult to perform, pull slightly the earthing spring so that it is not in contact with the surface of the tube.

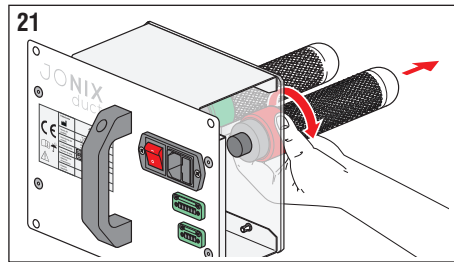


Fig. 22: Screw delicately the ionising tube holding on to the base (green part). If the operation is difficult to perform, pull slightly the earthing spring so that it is not in contact with the surface of the tube.

**ATTENTION: do not overtighten the screw after reaching its end stop.**



Check that the earthing spring is in contact with the outer mesh once the ionising tubes have been screwed back into place. Otherwise contact the manufacturer.

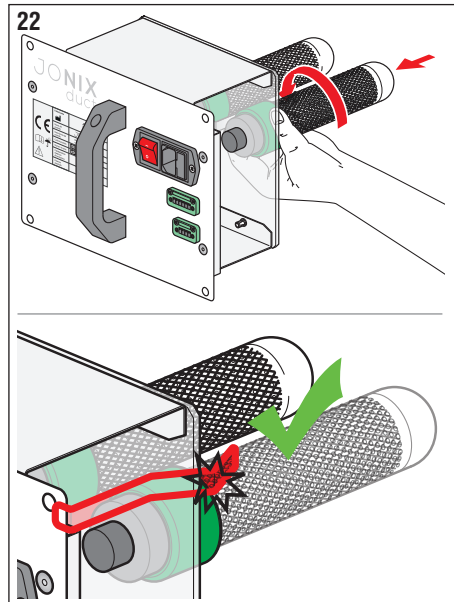


Fig. 23: Reposition the JONIX duct module, inserting it horizontally into its box by using the handle and tighten the 4 fixing screws.

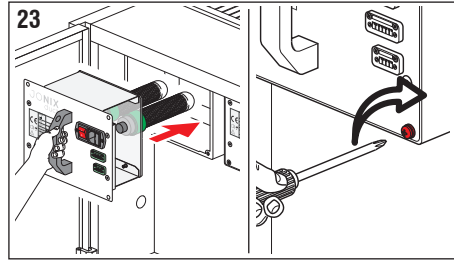


Fig. 24: Reinsert the power supply plug and all other plugs into the specific sockets of the JONIX duct module. Switch the module on by turning the On/Off switch to I.

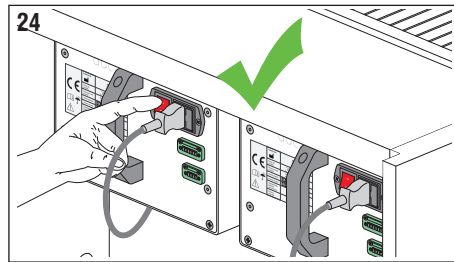


Fig. 25: Close the rear panel.

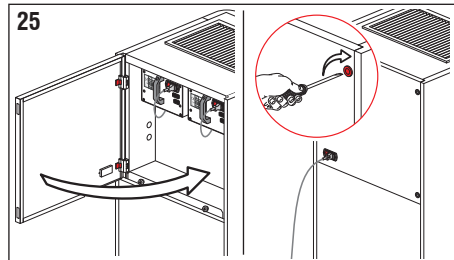
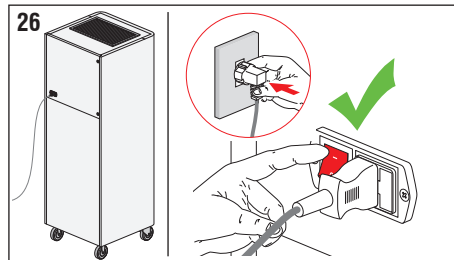
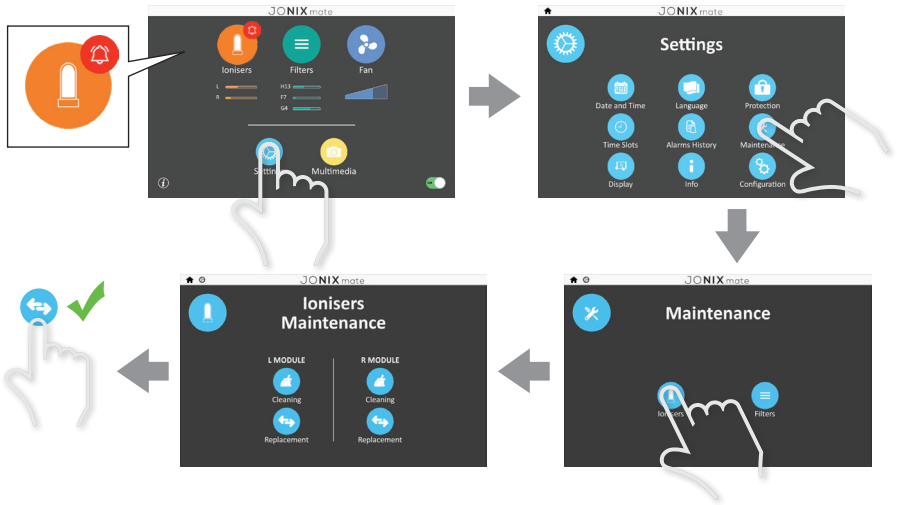


Fig. 26: Reinsert the power supply plug. Switch the device on by turning the On/Off switch to I.



## Register the maintenance operation done using the display:



## Reset the alarm launched by the device in the alarm screen:



Make sure the condensers work properly: you must be able to hear a slight hissing. Check that the device responds to commands. Should a malfunction persist, unplug the device from the mains and contact qualified staff.

**Failure to clean the ionising tubes when indicated by the device leads to a drop in system performance.**

## 7.3.1 Replacing the ionising tubes



Replace the ionising tubes every time it is notified on the display.

Fig. 27: Switch the device off by turning the luminous On/Off switch to **0**. Remove the plug connected to the mains.

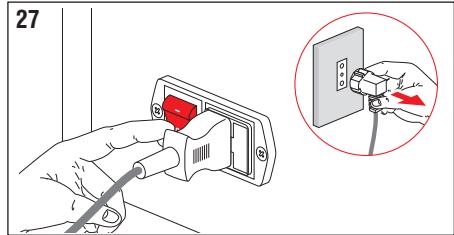


Fig. 28: Use a screwdriver to open the rear panel. Unscrew the 2 knobs which keep the rear bottom panel closed.

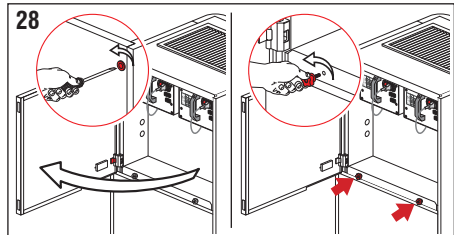


Fig. 29: Pull it towards you and then lift and remove the panel.

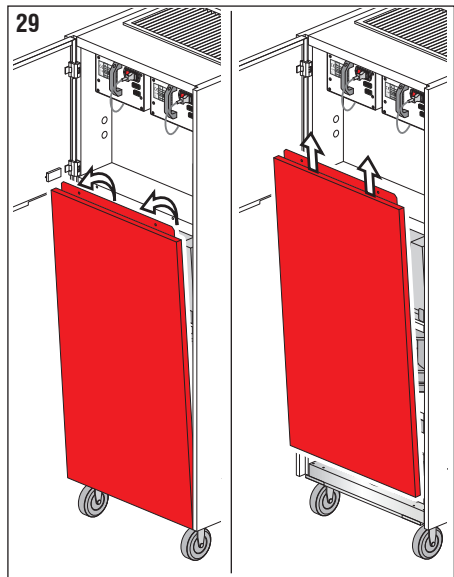


Fig. 30: Type of filters on the JONIX mate device:

- a) Absolute filter H13
- b) Thin particulate filter F7
- c) Prefilter particulate coarse G4



**NOTE: periodically verify the status of the G4 filter ("c"), regardless of the indications on the display, mostly in dusty environments.**

**In case it has filth and it is not yet time to replace it, clean it using a vacuum cleaner.**

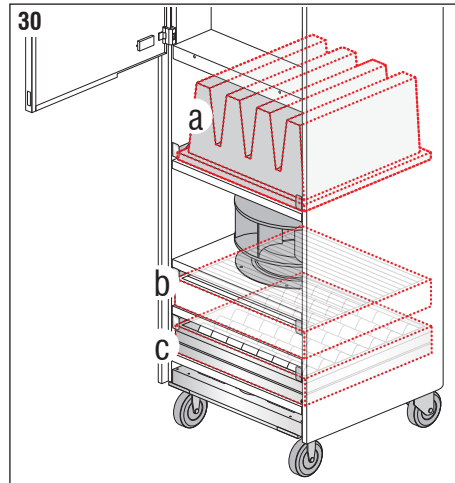


Fig. 31: Pull the filter locking tabs out. Extract the filters (a, b, c).



**NOTE: the dirty filters which cannot be used anymore must be disposed of accordingly to the indications in the chapter "DISPOSAL." H13, F7 and G4 filters are industrial waste.**

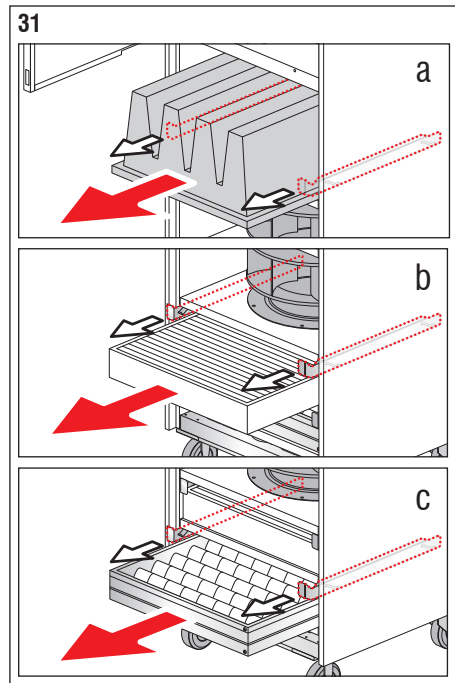




Fig. 32: Put the new / clean filters back in place. Push the filter locking tabs towards the device until they click.

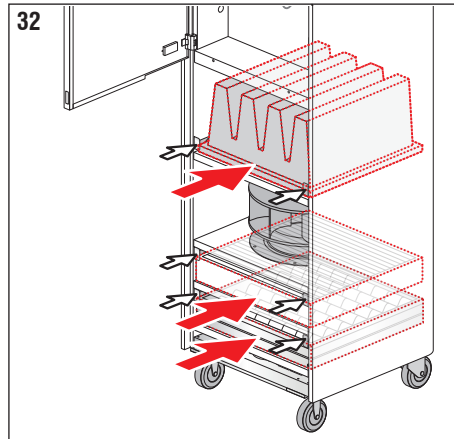


Fig. 33: Put the cover panel back in place. Screw the knobs back on.

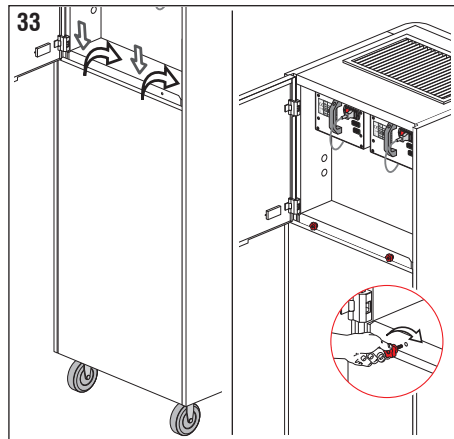


Fig. 34: Close the rear panel.

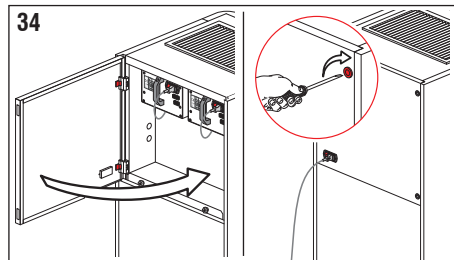
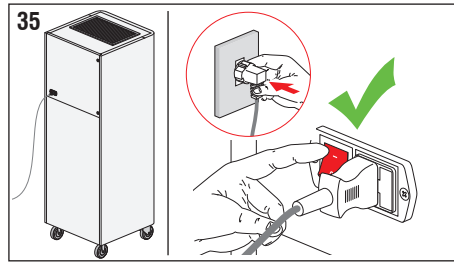
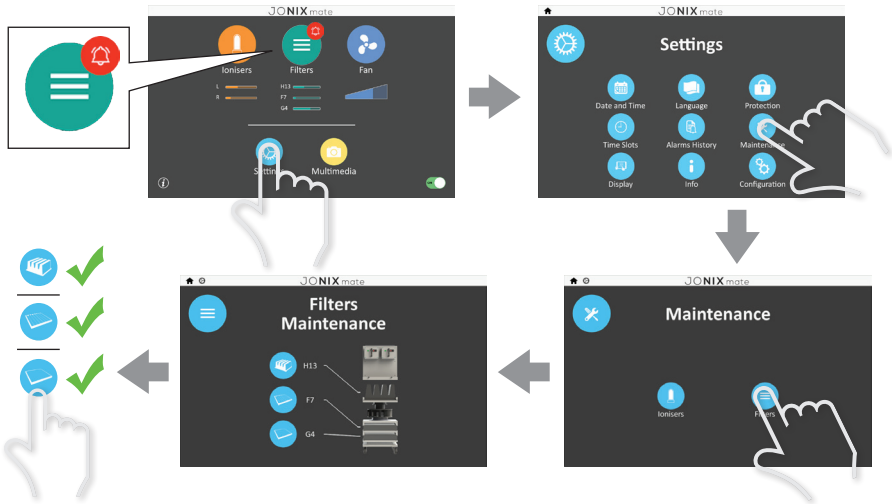


Fig. 35: Reinsert the power supply plug. Switch the device on by turning the On/Off switch to I.



Register the maintenance operation done using the display:



Reset the alarm launched by the device in the alarm screen:



 Check correct operation of the device.

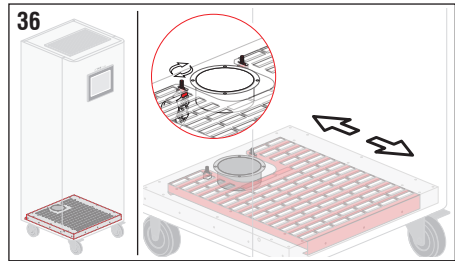
## 8 - ACCESSORIES

### 8.1 AIR OUTLET FOR OVERPRESSURE ROOMS

The JONIX<sub>mate</sub> module is provided with an additional air outlet, which can be connected by a duct to an environment outside the room where the machine is installed.

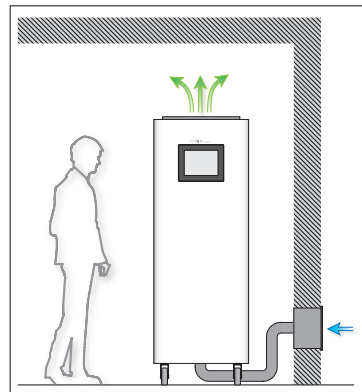
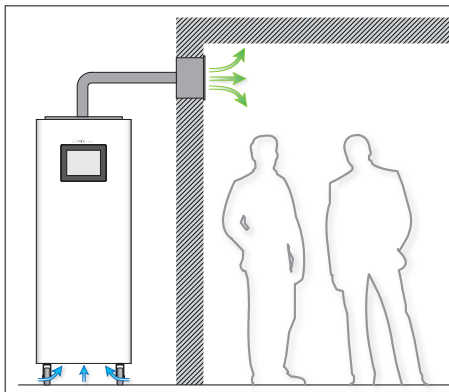
Fig. 36: By moving the grid, it is possible to set the fresh air percentage, up to a 7%, introduced on the total air flow.

**This allows the device to be used in rooms where overpressure must be generated.**



#### 8.1.1 Connection examples

Wall connection kits for suction and delivery are available on the price list.



➡ : ambient air. - ➡ : ionised air flow.

## 9 - OPERATIONAL CHECK AND TROUBLESHOOTING

This section summarises the most common problems that may arise when using the unit. Before contacting customer services, carry out the checks listed below.

PROBLEM	POSSIBLE CAUSE	SOLUTION
Alarm for filter with filth.	The sensors associated to the filter detect a pressure drop that is too high between inlet and outlet of the filter.	The filter must be replaced. Follow the procedure in paragraph 7.3.2.
Alarm maintenance ionising module.	The system detects the need of cleaning the ionising module.	The tubes of the ionising module related to the alarm have to be cleaned Follow the replacement of the ionising tubes procedure in paragraph afo 7.2.1.
Alarm for the replacement of the ionising module.	The system detects the need of replacing the tubes for the ionising module.	The tubes in the ionising module related to the alarm must be replaced. Follow the replacement of the ionising tubes procedure in paragraph 7.3.1.
Alarm ionising module.	The system detects an irregularity in the operation of the ionising module.	The tubes of the ionising module related to the alarm must be cleaned or replaced. Follow the cleaning procedure; in the event that the alarm continues, follow the replacement procedure for the ionising tubes in paragraph 7.3.1.
Fan overload cut-off alarm.		Contact your local retailer.
Fan DP sensor faulty or disconnected.		Contact your local retailer.
Filter 1/2 DP sensor faulty or disconnected.		Contact your local retailer.



**In the event that you experience a malfunction other than those described above contact qualified staff (retailer, Manufacturer).**

Unplug the device from the mains and contact qualified staff for assistance even in the event of one or several of the cases below:

- The power cable is damaged or worn.
- The plug is damaged or worn.
- Water or liquid has been poured onto the device.
- In the event that there is a malfunction despite all the installation procedures have been carried out properly.

## 10 - DISPOSAL

When JONIX<sup>mate</sup> devices are no longer used they must be disposed of in compliance with the regulations in force in the country of installation. The unit consists of the following materials:

- Stainless steel.
- Aluminium.
- Glass.
- Nylon.
- Plastic.
- Paper and Cardboard.
- Wood.



The components subject to wear as H13, F7 and G4 filters are industrial waste.



### WASTE ELECTRICAL AND ELECTRONIC EQUIPMENT MANAGEMENT

This product falls within the application scope of the Directive 2012/19/EU concerning the management of waste electrical and electronic equipment (WEEE). Equipment must not be disposed of with household waste as it is made of different materials that can be recycled at special facilities. Please inquire through your municipal authorities as to the location of the eco-friendly waste management sites where waste can be received for disposal and its subsequent recycling as recommended. Furthermore, please note that, when an equivalent appliance is purchased, the seller is expected to collect free of charge the old product to be disposed of. The product is not potentially dangerous for human health and the environment, as it does not contain any harmful substances according to the Directive 2011/65/EU (RoHS), but if disposed of freely in the environment, it might adversely affect the ecosystem.

Read the instructions carefully before using the equipment for the first time. It is strongly recommended not to use the product for any purpose other than that for which it was designed, to prevent the risk electric shock if the product is used incorrectly.

## NOTES

.....

.....

.....

## WARRANTY CONDITIONS

The Manufacturer guarantees the repairs of the systems that you have purchased and that are distributed throughout the country, in the event that the system shows signs of faulty materials or incorrect manufacture, subject to the following conditions:

1. The warranty starts from the date of purchase and lasts for 12 months.
2. No warranty is provided for the breakage of the ionising tube.
3. Failure to comply with operating and maintenance instructions contained in the manual attached to the device voids the warranty.
4. The purchaser has the right to benefit from the 12 month warranty only if the warranty certificate is filled in correctly in all parts and sent within 10 days of purchase to:

*JONIX S.r.l., Viale Spagna, 31/33 – 35020 Tribano (PD) Italy*

5. The warranty is only valid if the system is purchased from an authorised retailer.
6. The warranty includes free repair or replacement of the components which are faulty due to incorrect manufacture and does not include the replacement of the device under any circumstances.
7. Warranty repairs are carried out solely by the retailer or the manufacturer.
8. The warranty does not cover systems that are damaged or faulty due to: replacement of components or accessories with others of a type that is not explicitly approved by the manufacturer, interventions carried out by unauthorised or unqualified staff, non-compliance with the environmental conditions, neglect, lightning, floods, fire, acts of war, riots. Malfunctions due to incorrect installation are not covered.
9. The warranty does not cover systems with illegible, missing or altered serial numbers or labels.
10. To benefit from the warranty, the purchaser must contact the supplier, delivering the device at a later stage, accompanied by a document proving the purchase.
11. All transport costs and the relative risks are under the purchaser's responsibility.
12. Carrying out one or several repairs during the warranty period does not change the warranty expiry date.
13. The manufacturer disclaims any liability for any direct or indirect damage caused to people or property due to defects resulting from the product being used incorrectly.

The user authorises the manufacturer and related customer support services to store and use personal data in accordance with Italian Legislative Decree No. 196 dated 30/06/2003. In accordance with Art. 7 of Italian Legislative Decree No. 196/2003 you may exercise your rights at any time with regard to the data controller (JONIX srl).

**EC DECLARATION OF CONFORMITY**

**JONIX S.R.L.**

LEGAL SITE Viale Spagna, 31/33 – 35020 Tribano (PD)  
 SCIENTIFIC SITE Via Tegulaia 10/b - 56121 Pisa  
 OPERATIVE SITE Via Romagnoli, 12/A - 40010 Bentivoglio (BO)

**declares that  
 the following products**

DESCRIPTION	<i>Devices for active sanitation and air purification</i>	
MODELS	<ul style="list-style-type: none"> <li>○ Cube</li> <li>● Mate - mini Mate</li> <li>○ Steel</li> </ul>	<i>Select the model to which the declaration refers to</i>
PRODUCT TYPE	<ul style="list-style-type: none"> <li>○ JONIX<sub>cube</sub></li> <li>● JONIX<sub>mote</sub></li> <li>○ JONIX<sub>minimate</sub></li> <li>○ JONIX<sub>steel</sub></li> </ul>	<i>Select the model to which the declaration refers to</i>
product code	xxx	
serial n°	xxx	

**/ F U L F I L S**

**to the requirements of the Machinery Directive 2006/42/EC**

**reference standard**

EN 12100:2010  
 EN 60204-1:2016

**OTHER APPLICABLE DIRECTIVES**

2011/65/EU ROHS Directive  
 2014/30/EU EMC Directive (ex 2004/108/EC)  
 2014/35/EU LVD Directive (ex 2006/95/EC)

**reference standard**

EN 60335-2-65:2003/A11:2012

Household and similar electrical appliances. Safety. Particular requirements for air-cleaning appliances

*This declaration of conformity is issued under the total sole responsibility of the manufacturer*

General manager **Mauro Mantovan**

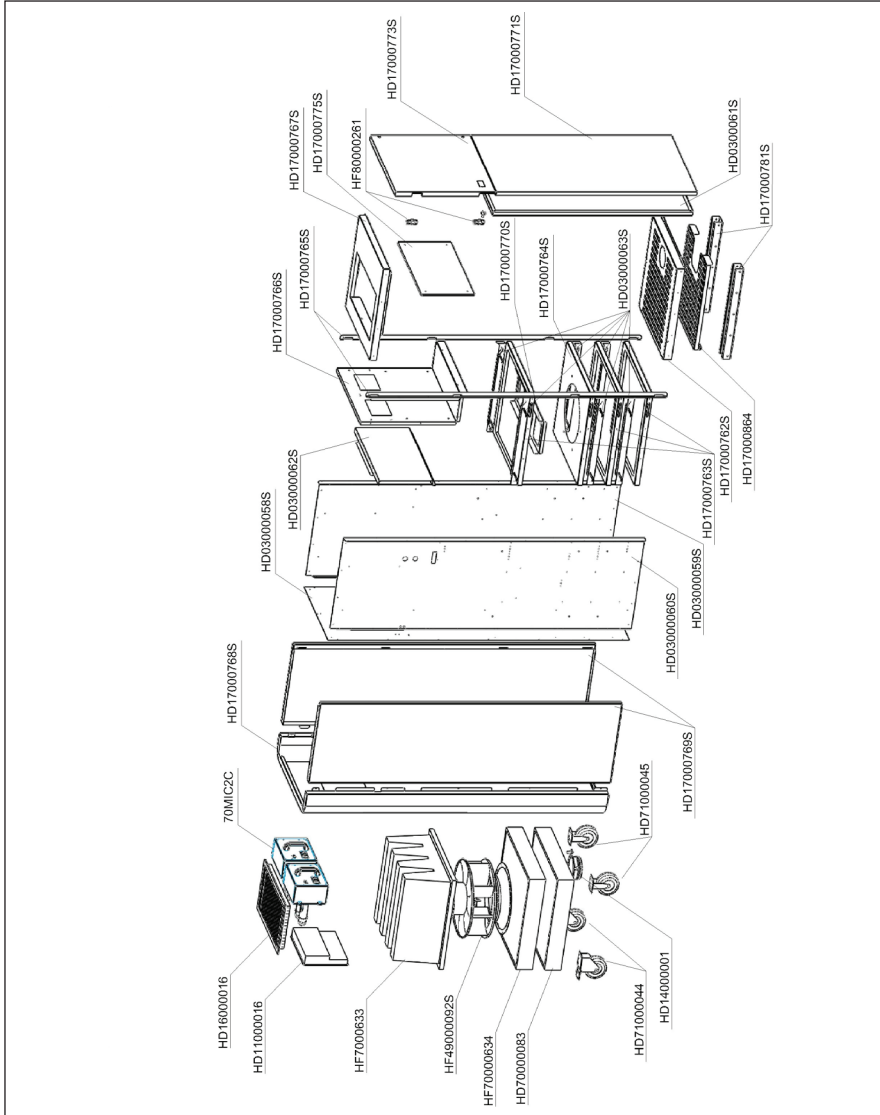
function



signature

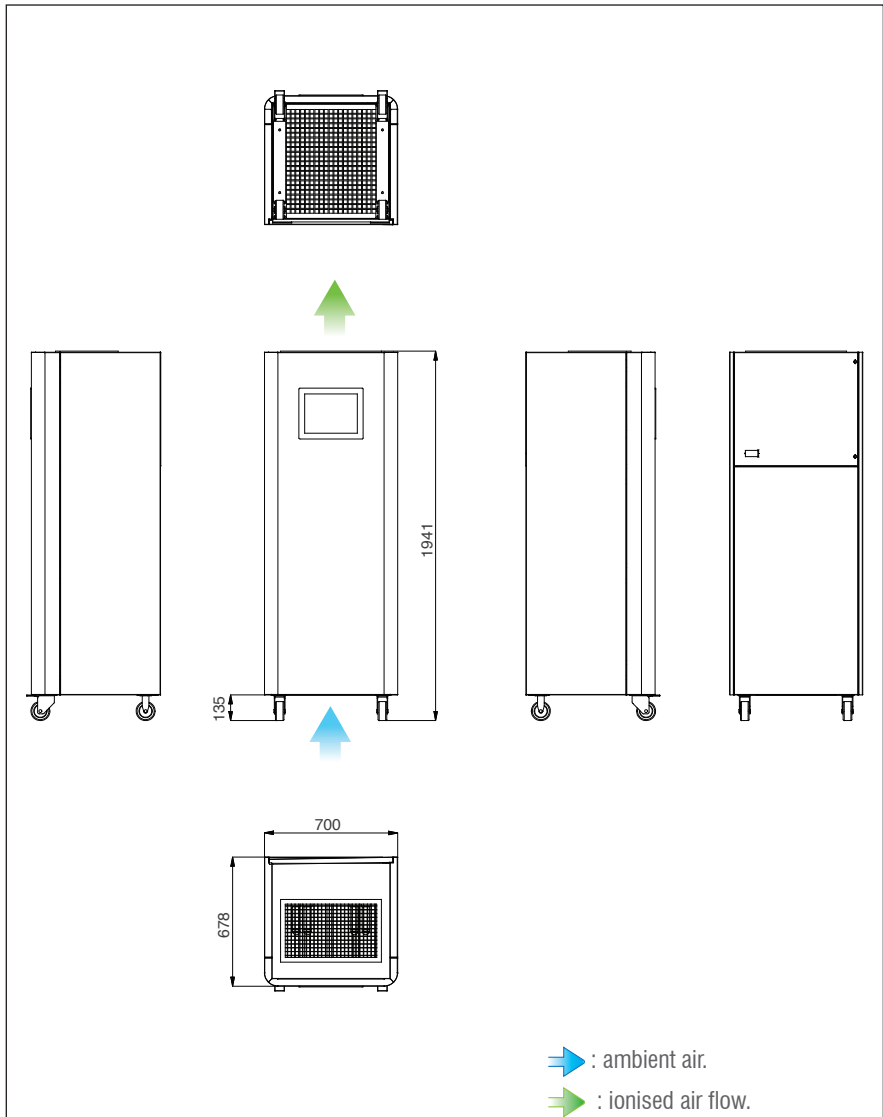
## ATTACHMENTS

### EXPLODED JONIX mate





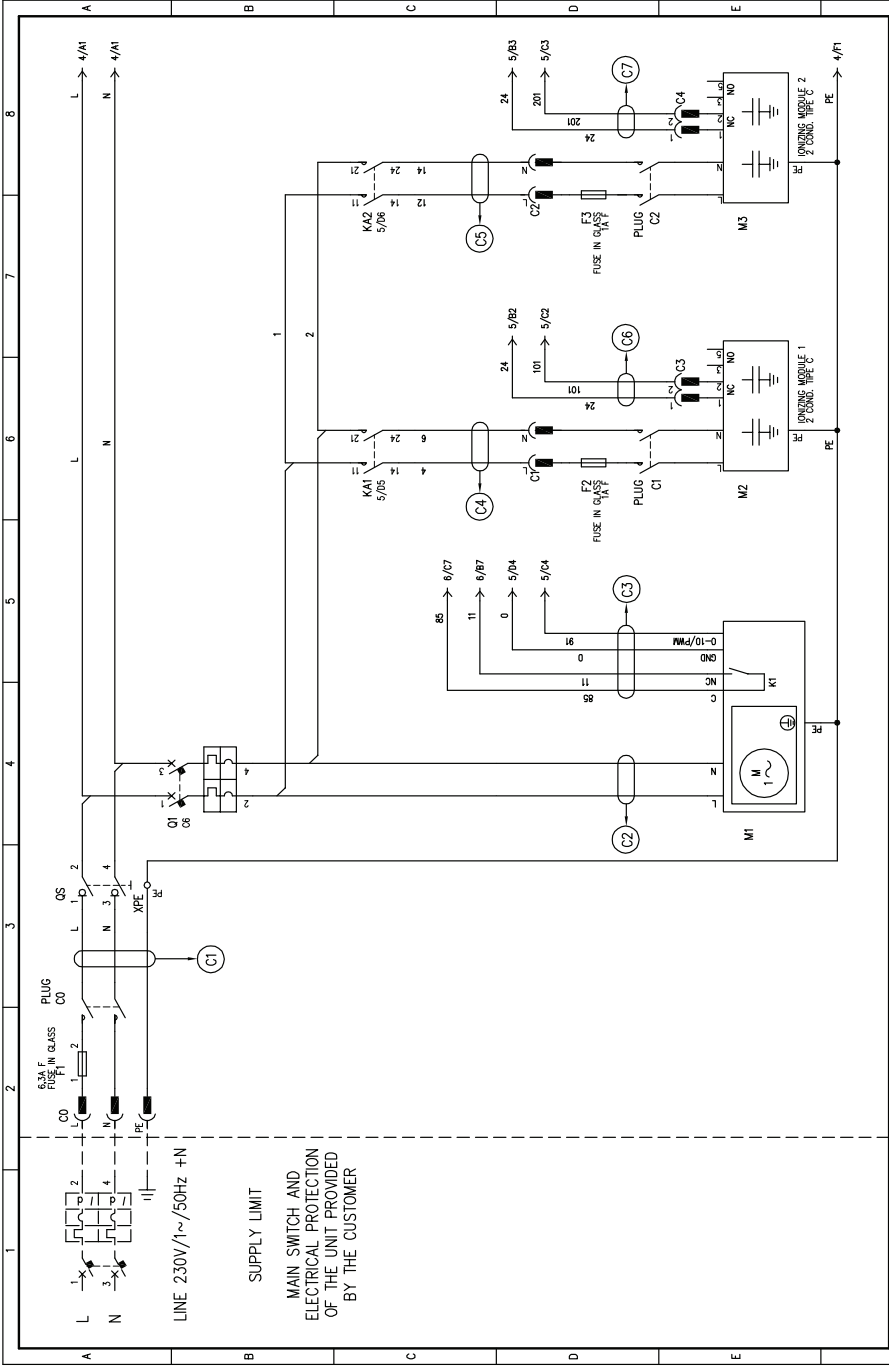
## EXPLODED JONIX mate



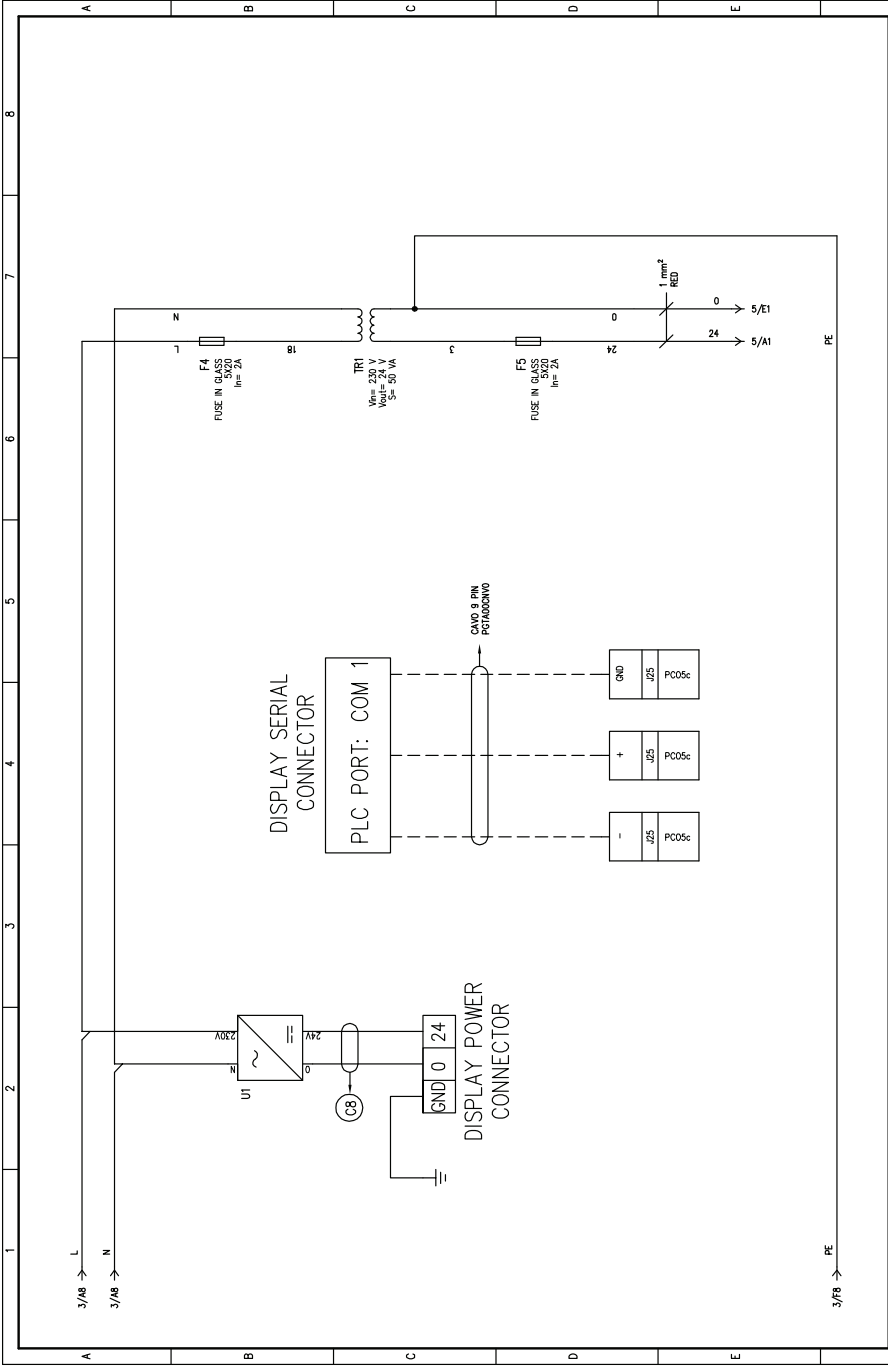
1	2	3	4	5	6	7	8
A	B	C	D	E	F	G	H
<p style="text-align: center;"><b>JONIX</b></p> <p style="text-align: center;">Manufactured by:                  HIdew S.r.l.                  Viale Spagna, 31/53                  35020 Tribano (PD) ITALY                  tel: +39 049 9588511                  fax: +39 049 9588522                  web: www.hidew.it</p>							
Serie	MED	Model	2000	Drawing code	HD621J0096	Controller	pC05 COMPACT
Power supply	230V / 1~+N / 50Hz	Auxiliary	24V / 50Hz	Created by	N.B.	Revision by	Last
Date	07.10.2014	Date	/	Max power [kW]	0,78	Date	/
FLA - max curr. [A]	3,46	LRA - start curr. [A]	3,46	Recommended prot.	10	COVER PAGE	MED 2000
ULTIMA	/	DATA	/	DATA	07.10.2014	COVER PAGE	HD621J0096
DISC. I/A	/	DA	/	DISC. I/A	/	MED 2000	1
CONTR. I/A	/	CONTR. I/A	/	CONTR. I/A	/	PAGINA	1
APPR. I/A	/	APPR. I/A	/	APPR. I/A	/	PAGINA	1
TOTAL	/	TOTAL	/	TOTAL	/	PAGINA	1
F	G	H	I	J	K	L	M

1	2	3	4	5	6	7	8
A	B	C	D	E			F
1	COVER PAGE						17
2	SUMMARY PAGES						3
3	FAN AND IONIZING MODULES						3
4	TRANSFORMER						2
5	AUXILIARY 24V						
6	AUXILIARY 24V						
7	IONIZING MODULE 1 (INTERNAL NOTE)						
8	IONIZING MODULE 2 (INTERNAL NOTE)						
9	IONIZING MODULES (INTERNAL NOTE)						
10	TERMINAL STRIP						
11	CABLES						
12	LAYOUT						
13	LAYOUT						
14	LAYOUT						
15	LAYOUT						
16	REVISION LIST						
17	MATERIAL LIST						
F	ULTIMA	/	REVISIONE	DATA			
				DATA	17.02.2004	DATA	17
				DISEG. N.B.		CONTINUA	3
				CONTR. I.G.		PAGINA	2
				APPR. I.D.C.	2	HD62.11.0096	8
				SUMMARY PAGES	MED 2000		

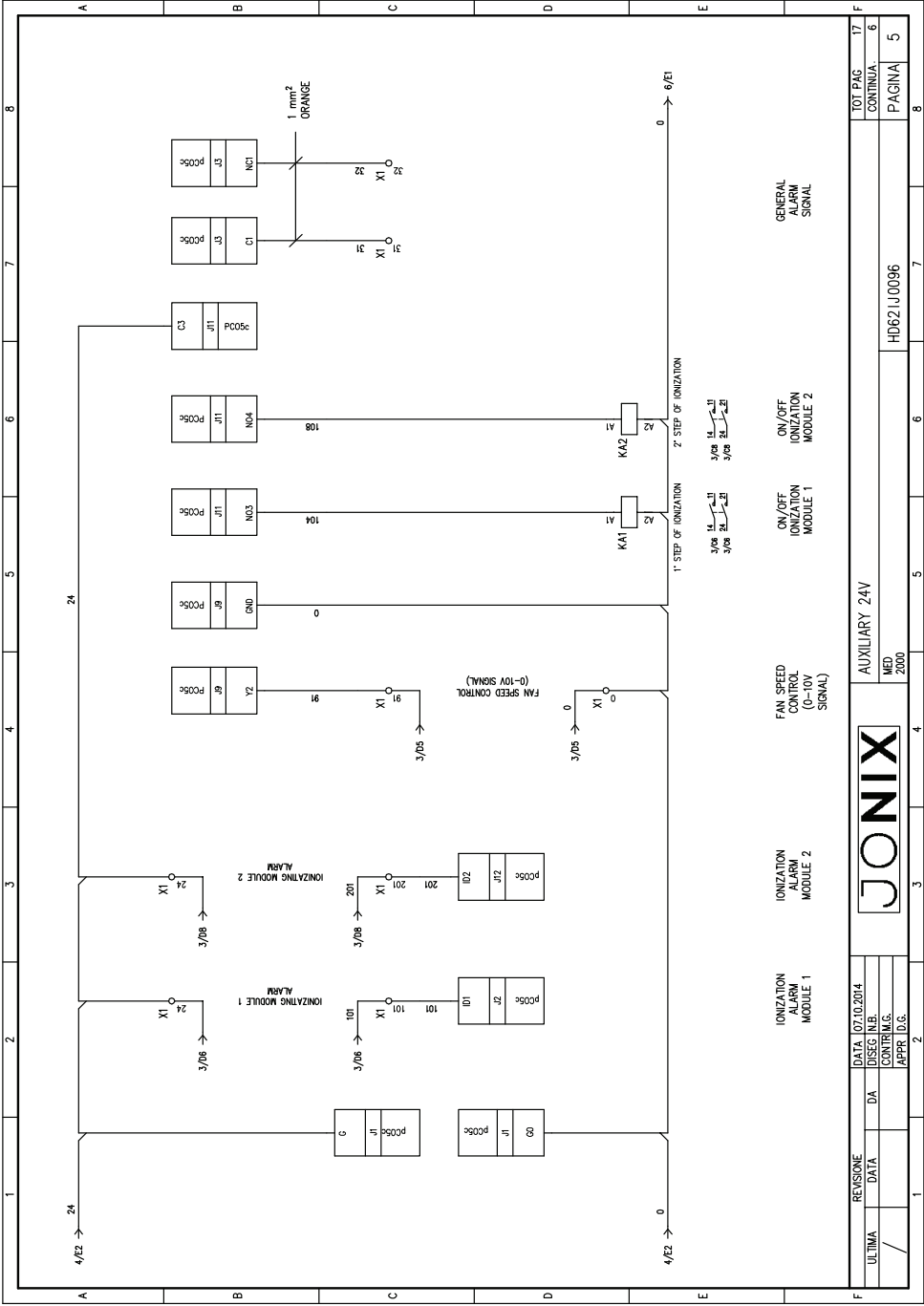




REVISIONE	DATA	07.10.2014	TOT. PAG.	17
ULTIMA	DATA	DA	CONTINUA	4
			PAGINA	3
			HD62 J0096	
			MOD.	
			2000	



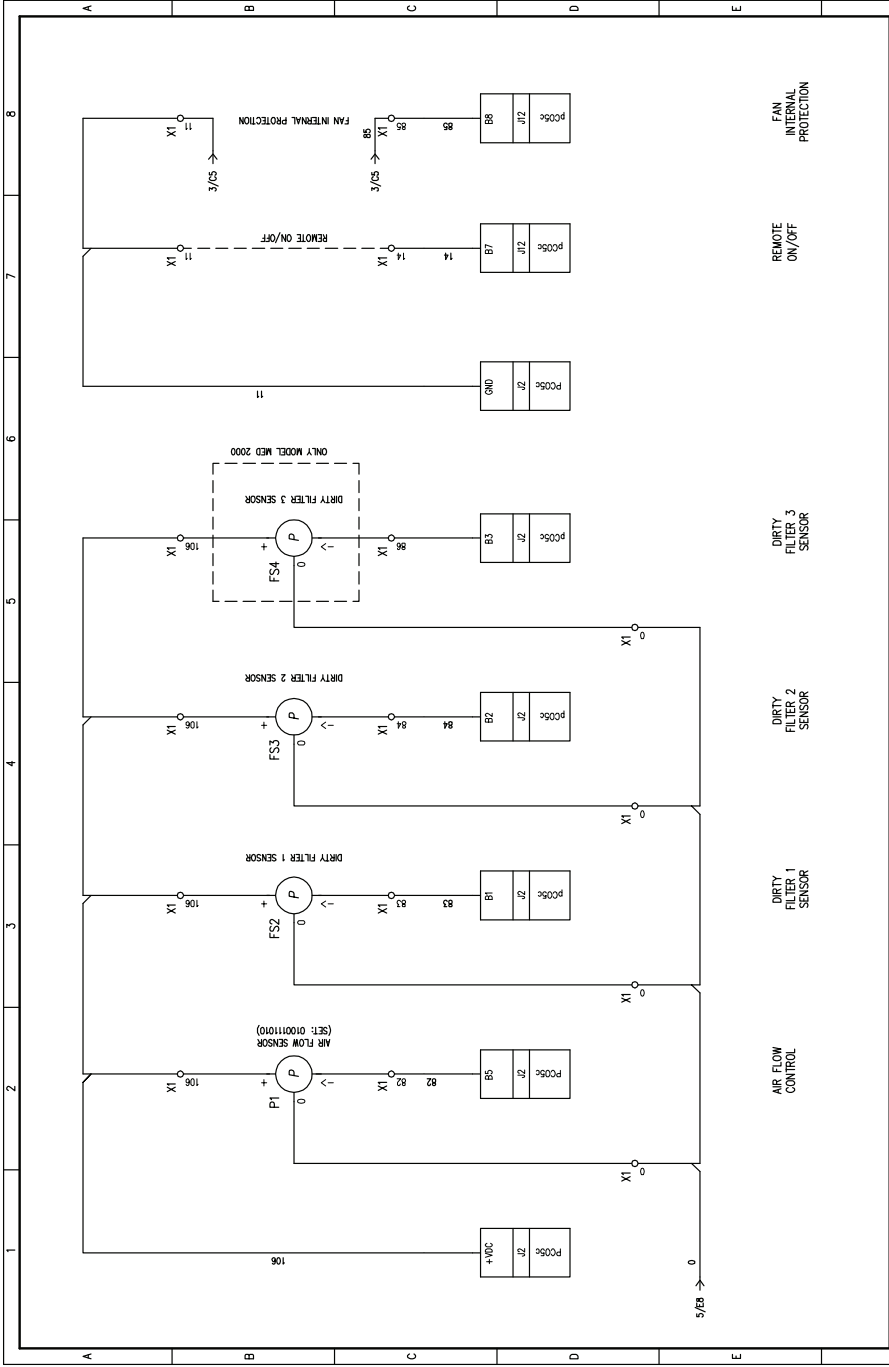
REVISIONE	DATA	107/10/2014	TRANSFORMER AND DISPLAY CONNECTOR		TOT. PAG.	17
ULTIMA	DATA	DA	MED		CONTINUA.	5
			2000		PAGINA	4
			APPR. D.C.			
			HD621J0096			



AUXILIARY 24V  
MED. 2000

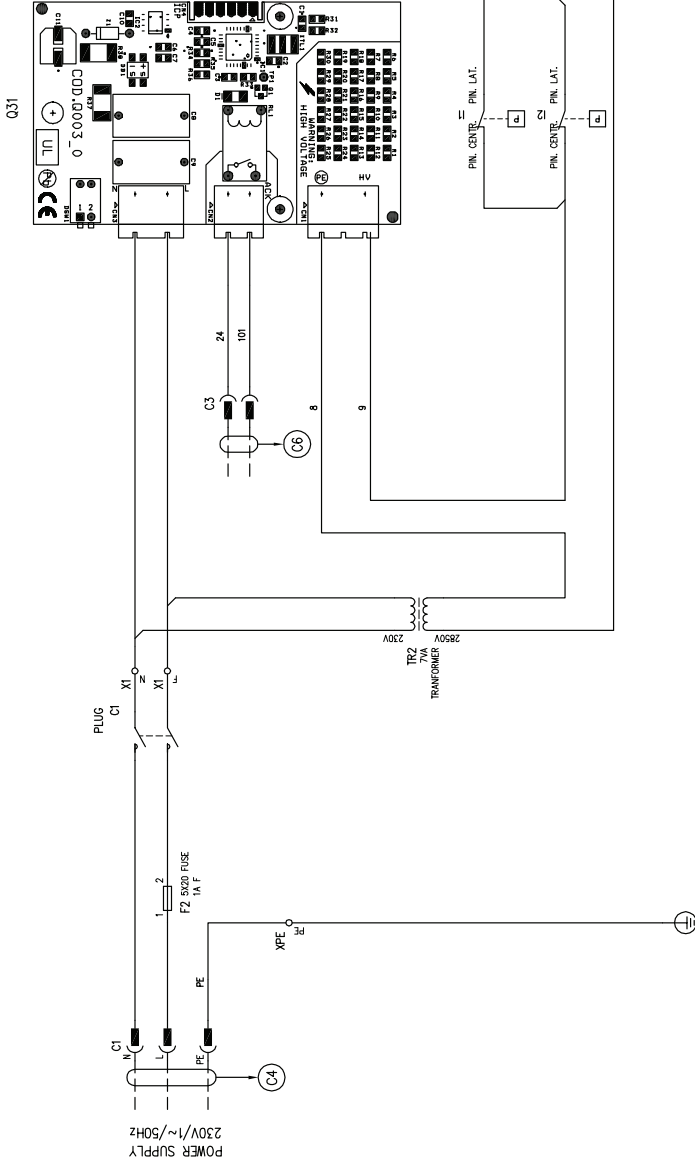
HD62 J 0096

REVISIONE	DATA	07.10.2014	TOT. PAG.	17
ULTIMA	DATA	DA	CONTINUA	6
			PAGINA	5
				8



REVISIONE		DATA	10/10/2014	AUXILIARY 24V			TOT PAG	17
ULTIMA	DATA	DA	DISSEG. N.B.	MED 2000			CONTINUA.	7
			CONTR.M.G.	HD62LU0096			PAGINA	6
			APPR. D.G.					

# IONIZING MODULE 1 (INTERNAL NOTE)



REVISIONE	DATA	07.10.2014
ULTIMA	DATA	DA
		DISC. N.C.
		CONF. I.C.
		APPR. D.C.



IONIZING MODULE 1 (INTERNAL NOTE)

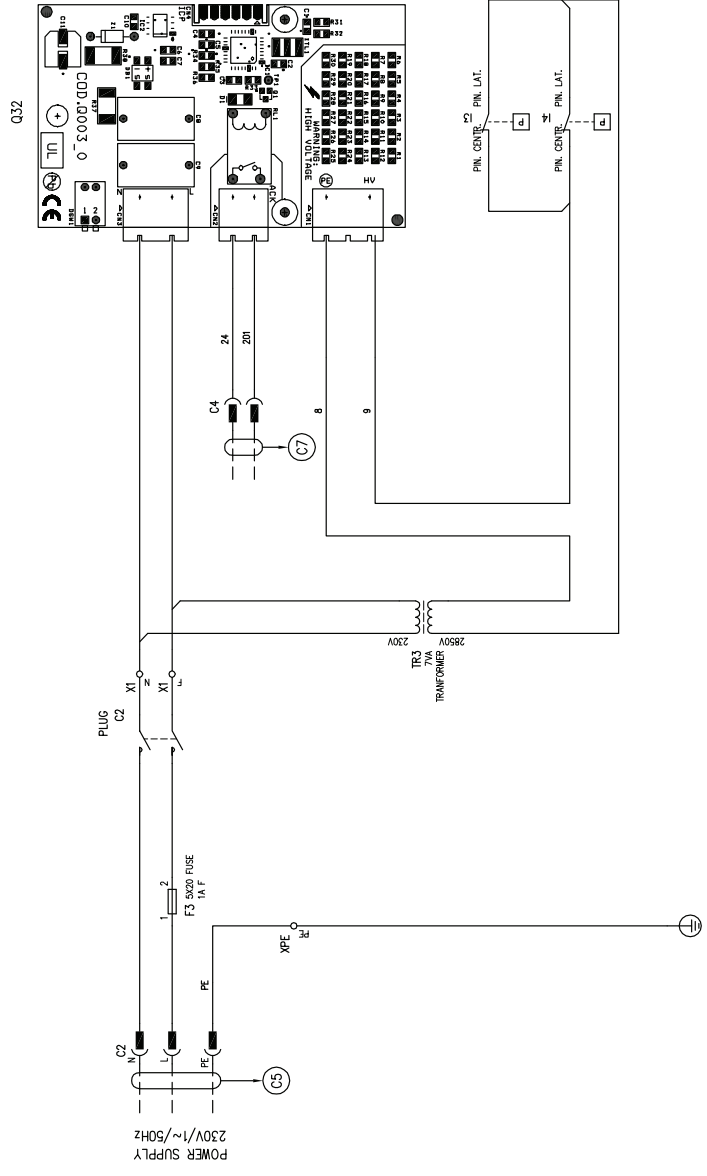
MED.  
2000

HD62 J 0096

TOT. PAG.	17
CONTINUA.	B
PAGINA	7



IONIZING MODULE 2 (INTERNAL NOTE)



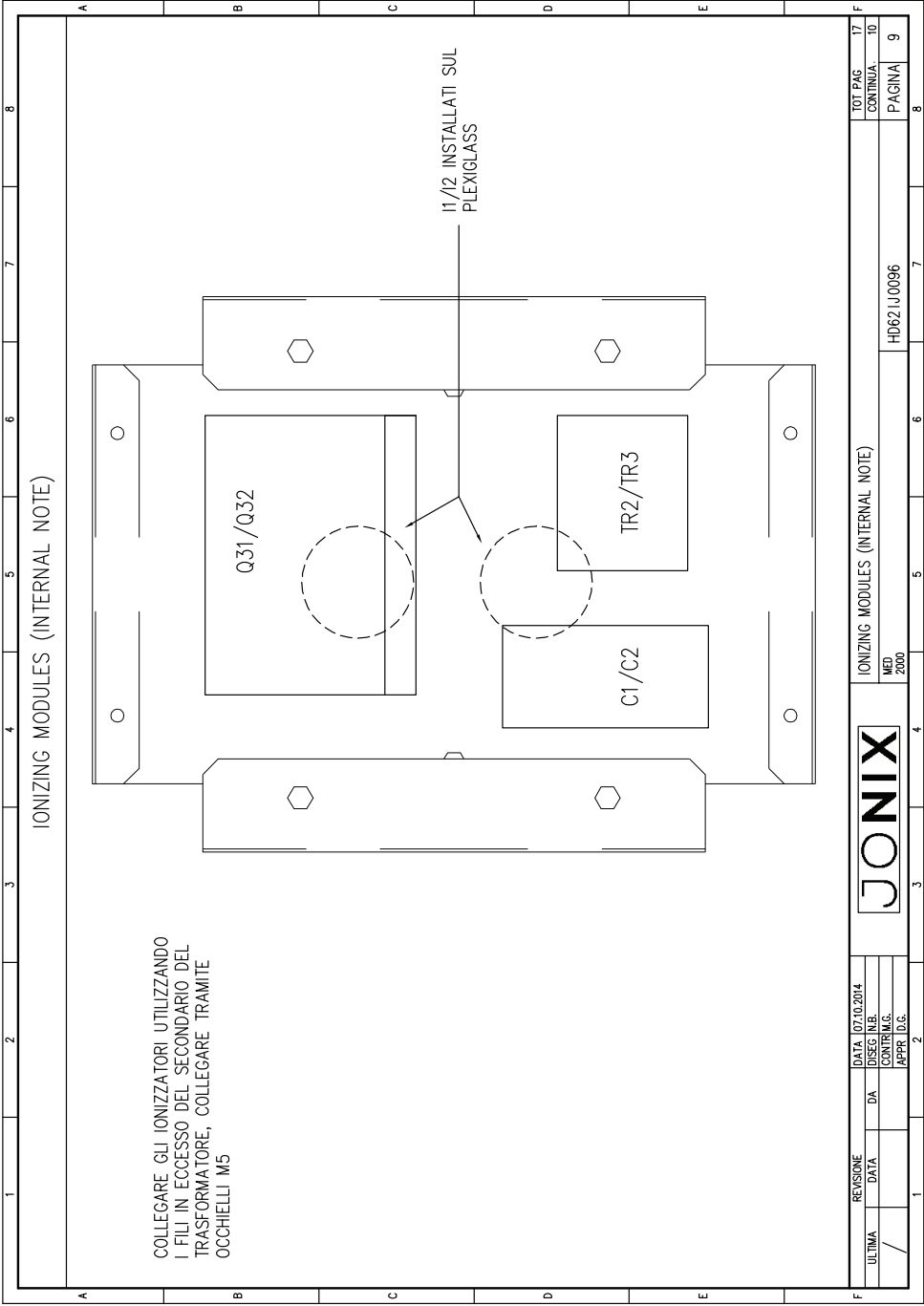
REVISIONE	DATA	07/10/2014
ULTIMA	DATA	05/08/2000
	DA	
	CONTR.M.G.	
	APPR. D.C.	

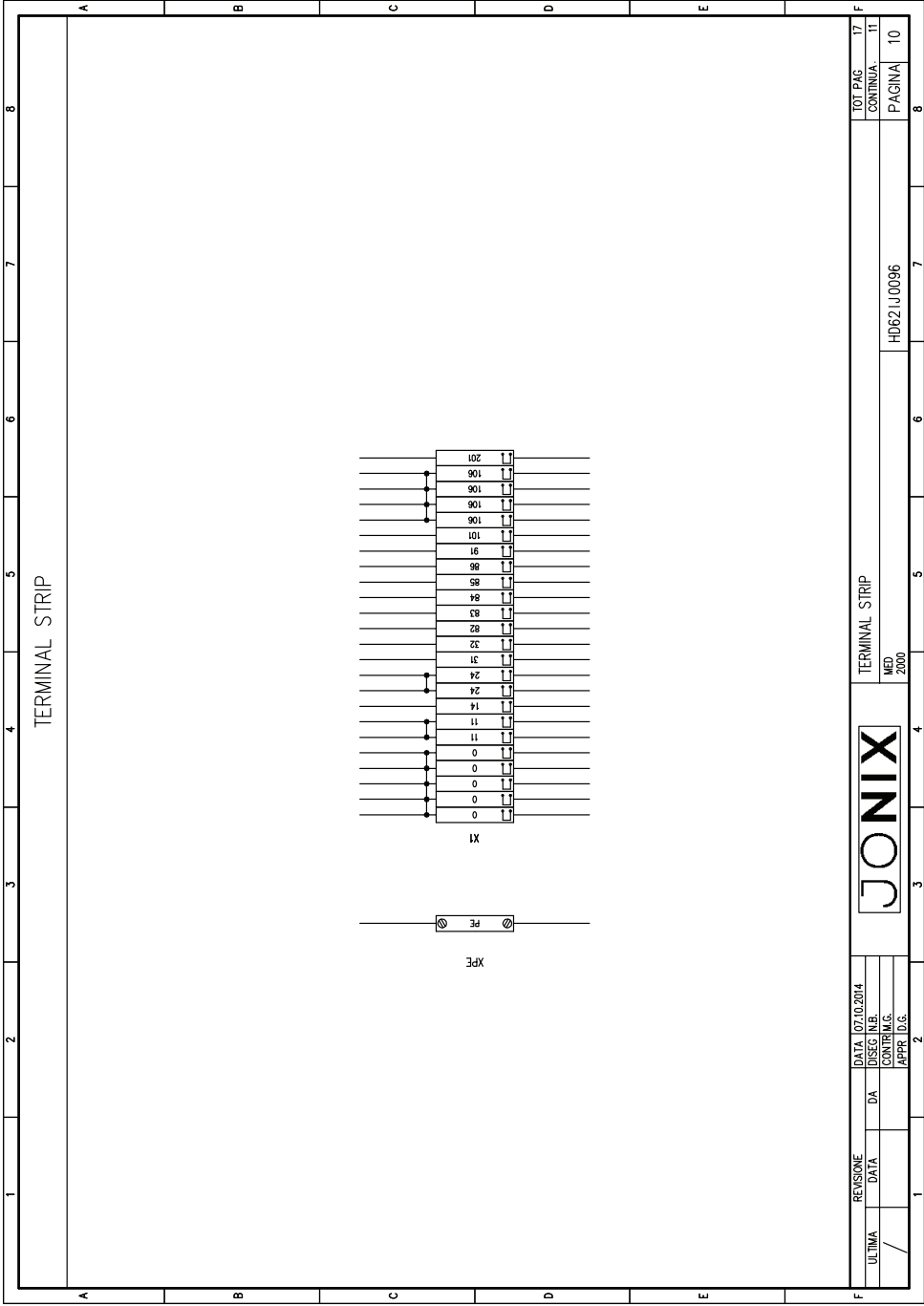


IONIZING MODULE 2 (INTERNAL NOTE)

HD62.U.0096

TOT. PAG.	17
CONTINUA.	9
PAGINA	8





REVISIONE	DATA	07.10.2014
ULTIMA	DATA	DA
		DISSEG. N.B.
		CONTINUA. G.
		APPR. D.G.

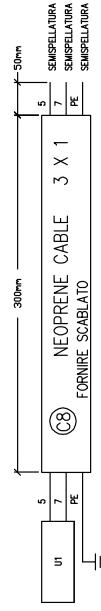
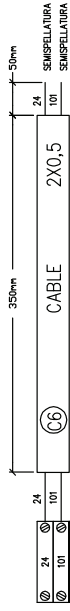
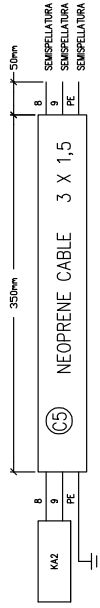
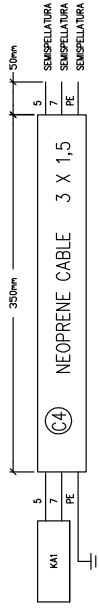
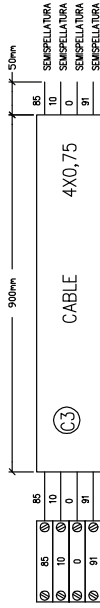
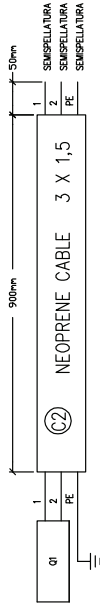
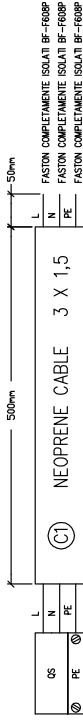
**JONIX**

TERMINAL STRIP  
MED  
2000

HD621J0096

TOT. PAG.	17
CONTINUA.	11
PAGINA	10

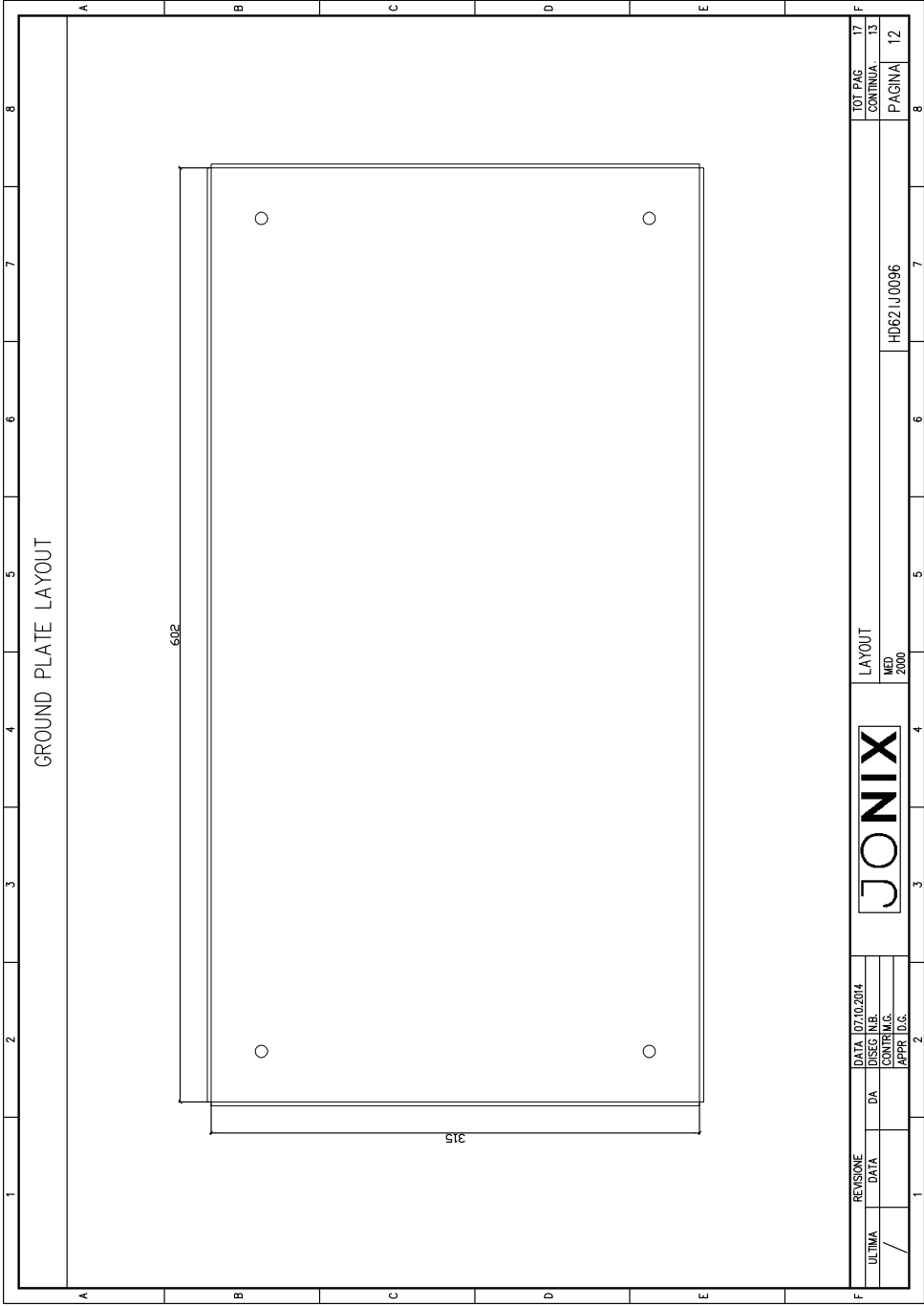
CABLES KIT (THE LENGHT OF THE CABLES IS REFERRED TO EXTERNAL SIDE OF THE ELECTRICAL PANEL)



REVISIONE	DATA	07.10.2014
ULTIMA	DATA	DA
		DISG. M.E.
		CONTINUA
		APPR. D.C.

<b>JONIX</b>	
CABLES	HD62 J 0096
REV. 2000	

TOT. PAG.	17
CONTINUA	12
PAGINA	11



GROUND PLATE LAYOUT

602

315

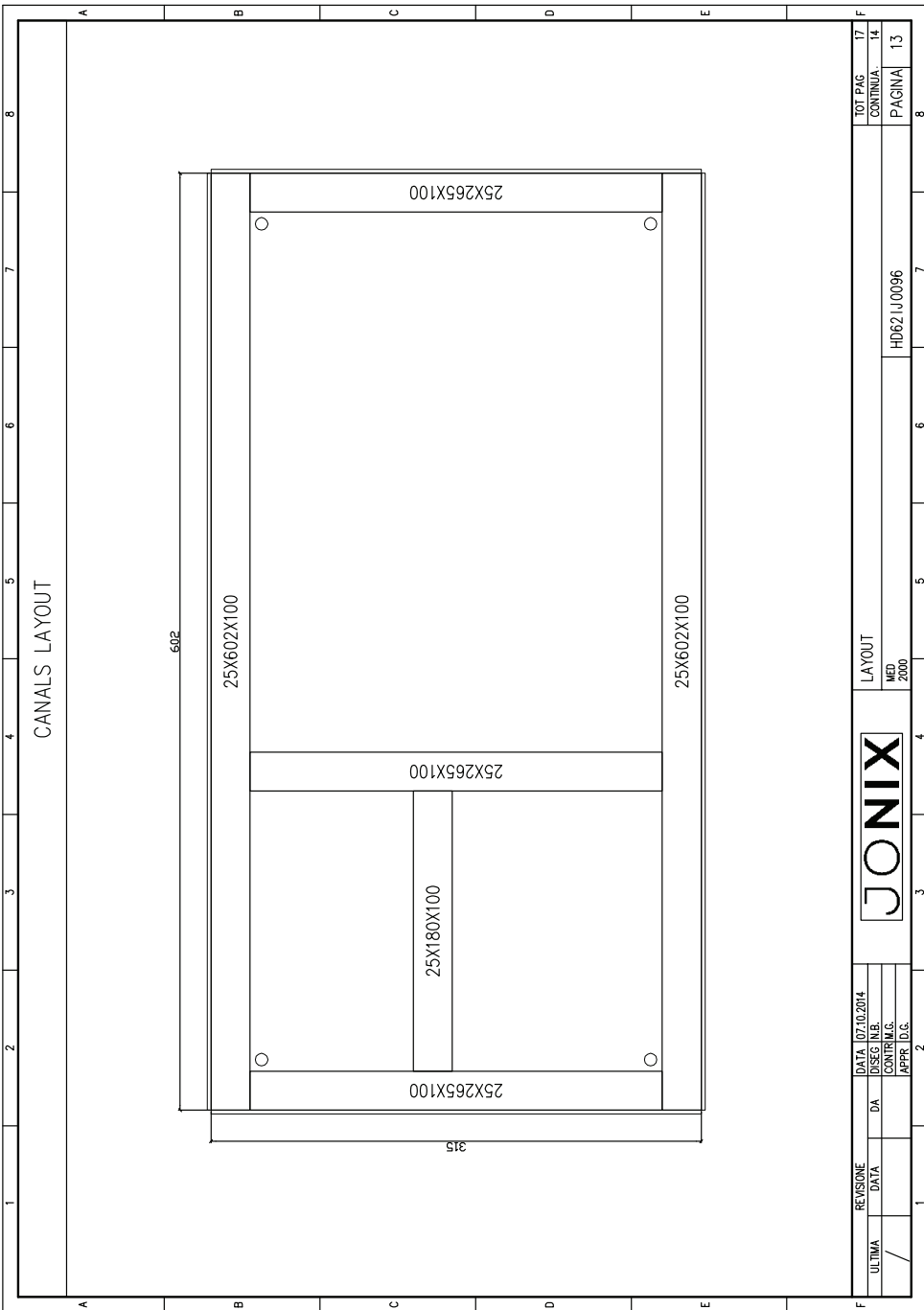
REVISIONE	DATA	07.10.2014
ULTIMA	DATA	DA
/		
	DISSEG. N.B.	
	CONTR.M.G.	
	APPR. D.G.	



LAYOUT  
MED  
2000

HD621J0096

TOT. PAG.	17
CONTINUA.	13
PAGINA	12



TOT. PAG.	17
CONTINUA.	14
PAGINA	13

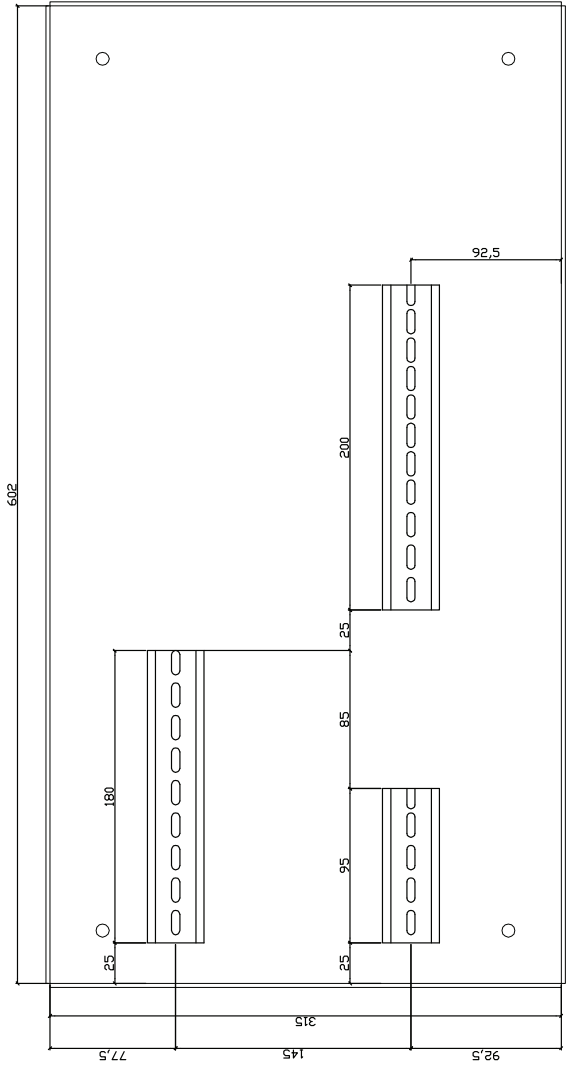
LAYOUT	HD62 U0096
MEM.	2000



DATA	07.10.2014
DISG.	1/2
CONTIN.	1/2
APPR.	1/2

REVISIONE	DATA	DA
ULTIMA	/	

DIN GUIDE LAYOUT (THE DIN GUIDES MUST BE HIGH 5mm)



REVISIONE	DATA	07/10/2014
ULTIMA	DATA	DA
		DISSEG. N.B.
		CONTR.M.G.
		APPR. D.G.

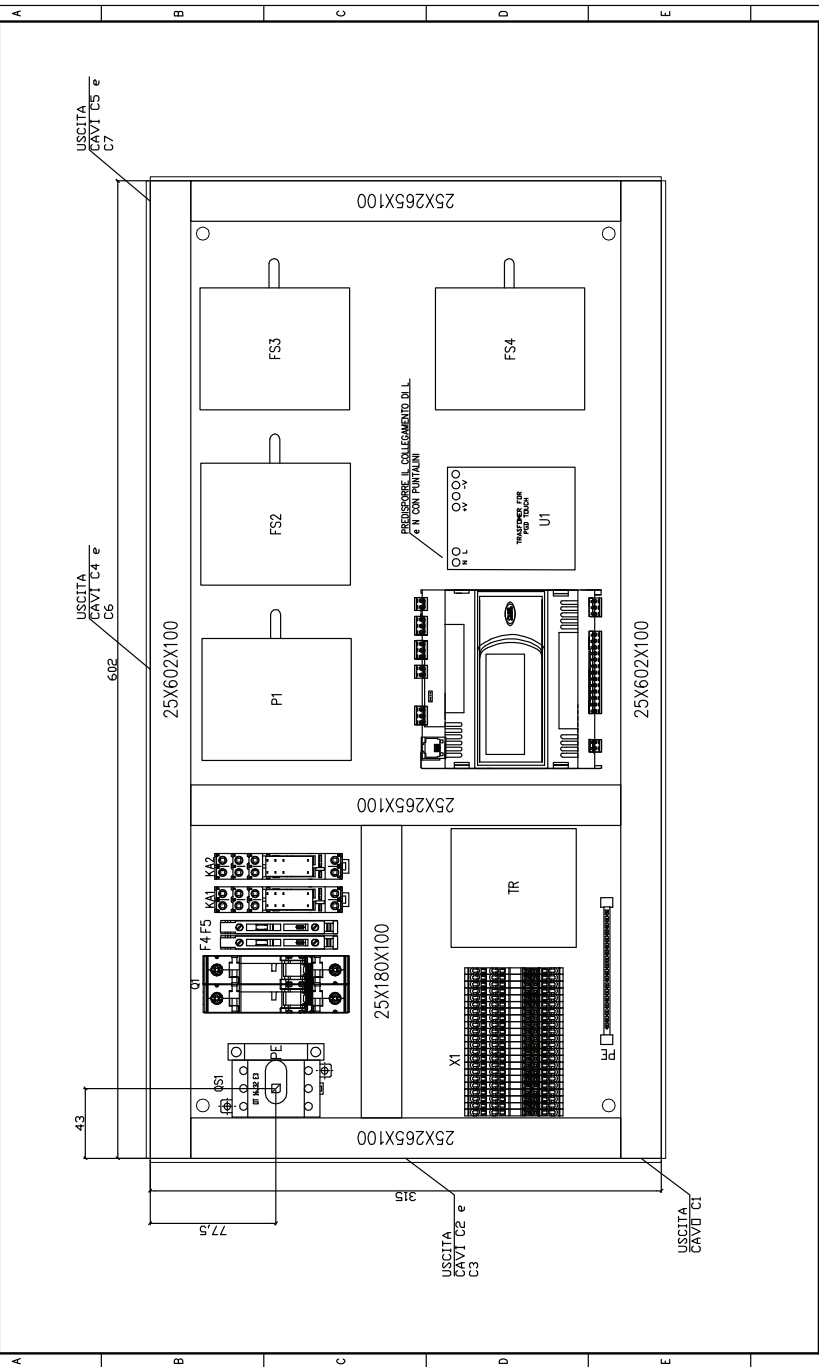


LAYOUT  
MED  
2000

HD621J0096

TOT. PAG.	17
CONTINUA.	15
PAGINA	14

COMPONENTS LAYOUT



REVISIONE		DATA	07.10.2014	LAYOUT		TOT. PAG.	17
ULTIMA	DATA	DA		REV.	2000	CONTINUA	16
/				HD62 J 0096		PAGINA	15
		APPR. D.G.				8	



A	REVISION	DATE	MODIFICATIONS	BY	N.B.
/	07/10/2014	FIRST EMISSION			
<p style="text-align: center;">REVISIONS LIST</p>					
F	ULTIMA	/			



REVISION LIST


MED  
2000

HD621J0096

TOT PAG	17
CONTINUA.	17
PAGINA	16

STANDARD BILL OF MATERIALS

SYMBOL	FUNCTION	BRAND	CODE	DESCRIPTION	QUANTITY	M.U.
QS	MAIN SWITCH	ABB	0T16F3-HRY3AU-HOXSBX105	MAIN SWITCH	1	PCE
O1	FAN-HORIZONATION MODULES PROTECTION	SIEMENS	5SY6206-7	INT. AUT. IP-HN C 6A 6IA	1	PCE
F	FUSE BOX	PHOENIX	304100	FUSE BOX UK 5--HESI	2	PCE
F4	TRANSFORMER PROTECTION	ITALWEBER	0102002	FUSE 5X20 In=2A	1	PCE
F5	AUXILIARY CIRCUIT PROTECTION	ITALWEBER	0102002	FUSE 5X20 In=2A	1	PCE
TRI	TRANSFORMER	BOTTER	-	TRANSFORMER VIn=230V / Vout=24V S=50VA	1	PCE
KA1, KA2	IONIZATION MODULES ON/OFF	FINDER	46528024+9505+09571	RELAYS	2	PCE
X1	TERMINAL STRIP	PHOENIX	30312128	CLAMP ST 1.5 TWIN	24	PCE
XPE	TERMINAL STRIP	PHOENIX	3044092	CLAMP UT 2.5-PE	1	PCE
	GROUND PLATE	HIDSW	HD17000775S	GROUND PLATE	1	PCE
	GROUND BAR	-	-	GROUND BAR	1	PCE

REVISIONE	DATA	07.10.2014		MATERIAL LIST	TOT. PAG.	17	
ULTIMA	DATA	DA		MED.	CONTINUA.	PAGINA	17
				2000			
					HD62 J0096		



# JONIX

pure living

JONIX srl  
support@jonixair.com  
www.jonixair.com



Registered office  
viale Spagna 31/33  
35020 Tribano (PD) - Italy  
tel +39 049 9588511  
fax +39 049 9588522

Scientific headquarters  
via Tegulaia 10/b  
56121 Pisa - Italy  
tel +39 050 985165

Operational headquarters  
via Romagnoli 12/a  
40010 Bentivoglio (BO) - Italy